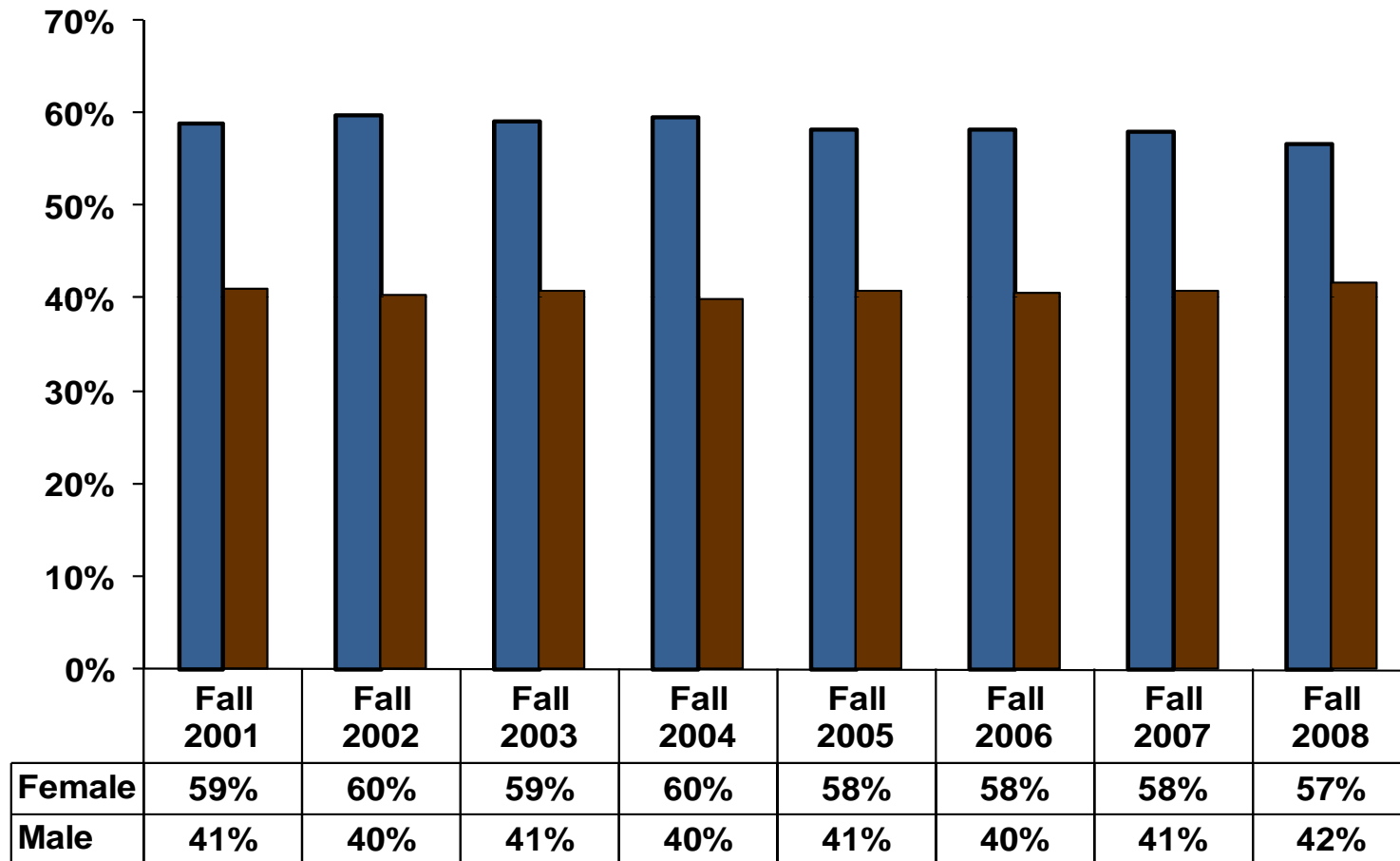
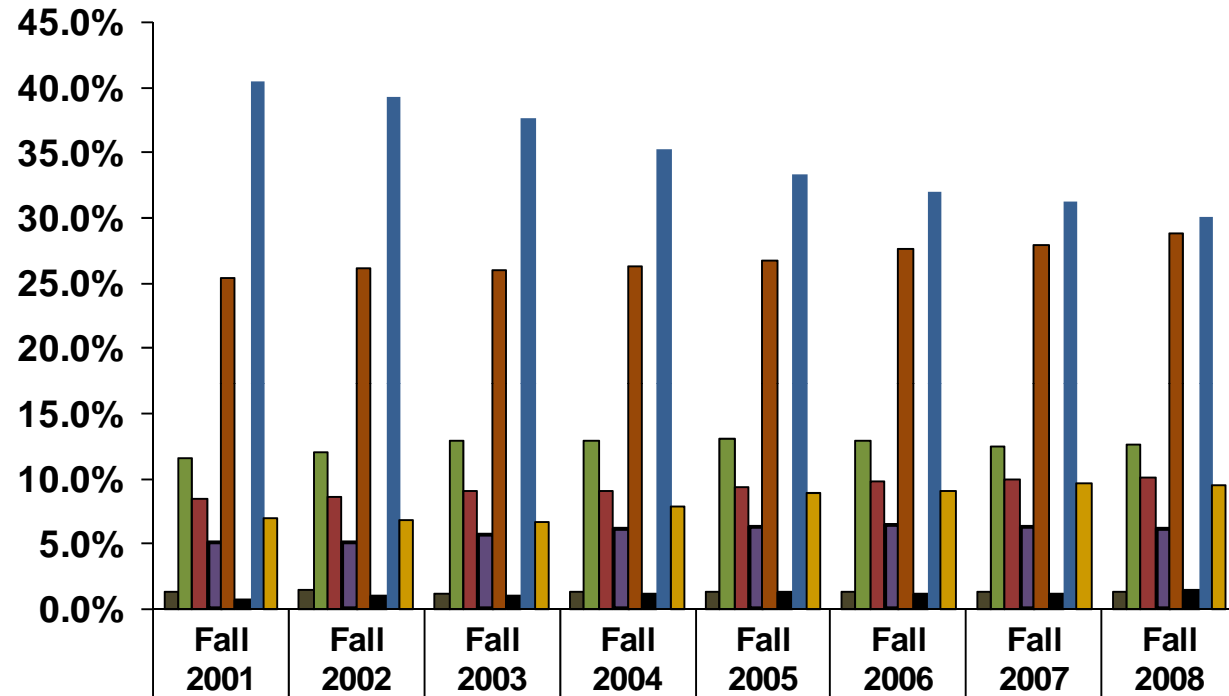


## Fall Enrollment by Gender as Percent of Total Fall 2001 - 2008

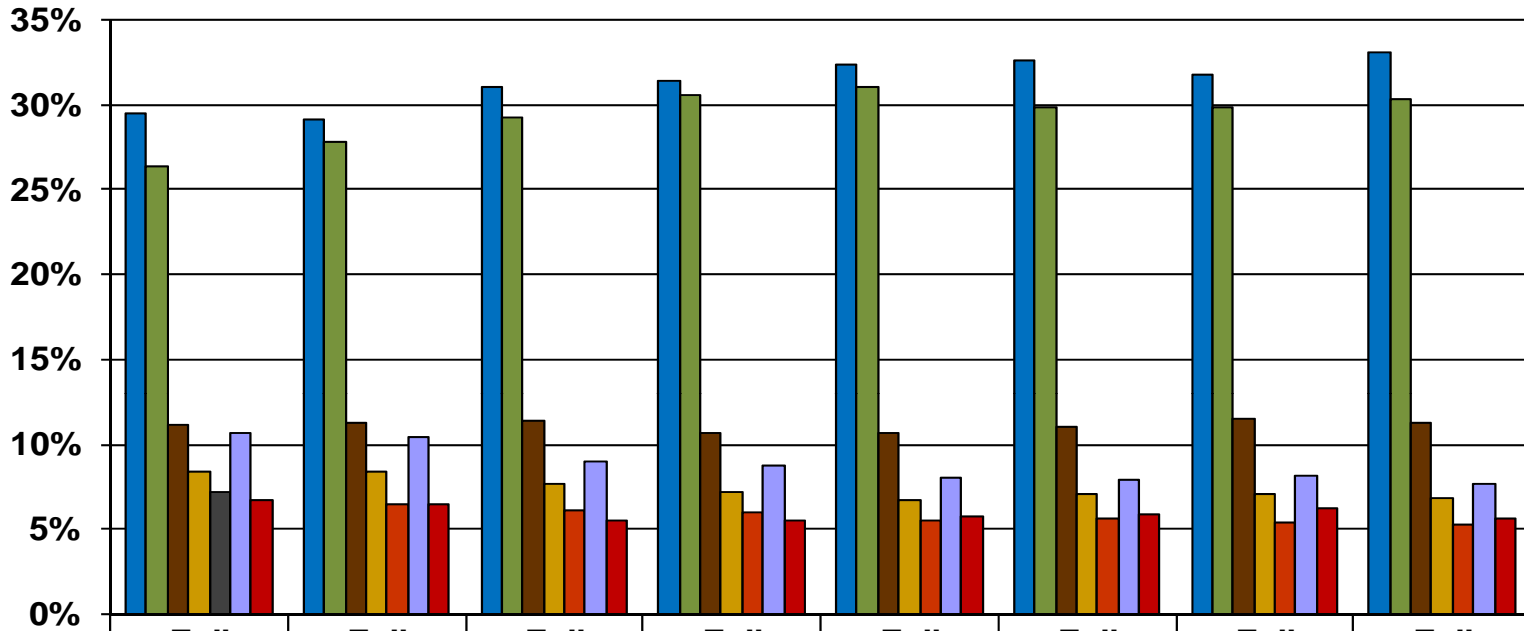


## Enrollment by Ethnicity as Percent of Total Fall 2001 - 2008



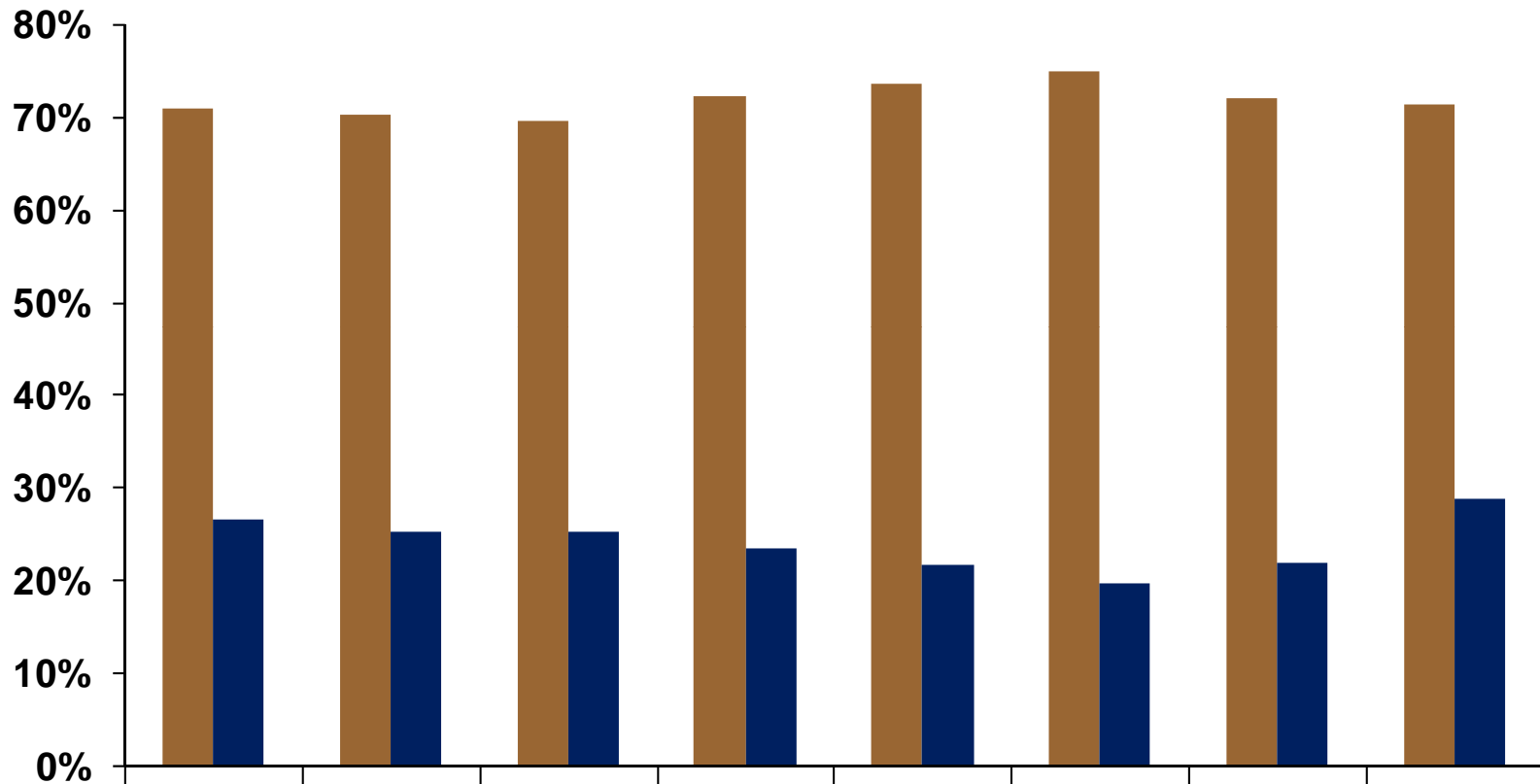
	Fall 2001	Fall 2002	Fall 2003	Fall 2004	Fall 2005	Fall 2006	Fall 2007	Fall 2008
■ Am Ind	1.4%	1.4%	1.2%	1.4%	1.3%	1.3%	1.3%	1.4%
■ Asian	11.6%	12.1%	13.0%	13.0%	13.0%	12.9%	12.5%	12.7%
■ Black	8.5%	8.6%	9.0%	9.1%	9.4%	9.8%	10.0%	10.1%
■ Filipino	5.1%	5.0%	5.7%	6.1%	6.3%	6.3%	6.3%	6.1%
■ Hispanic	25.4%	26.1%	26.0%	26.3%	26.7%	27.6%	28.0%	28.7%
■ Pac Isle	0.7%	0.8%	0.9%	1.1%	1.2%	1.1%	1.1%	1.3%
■ White	40.4%	39.2%	37.6%	35.2%	33.2%	31.9%	31.1%	30.1%
■ Other/Unknown	7.0%	6.8%	6.7%	7.9%	8.8%	9.1%	9.6%	9.6%

## Fall Enrollment by Age as Percent of Total Fall 2001 - 2008



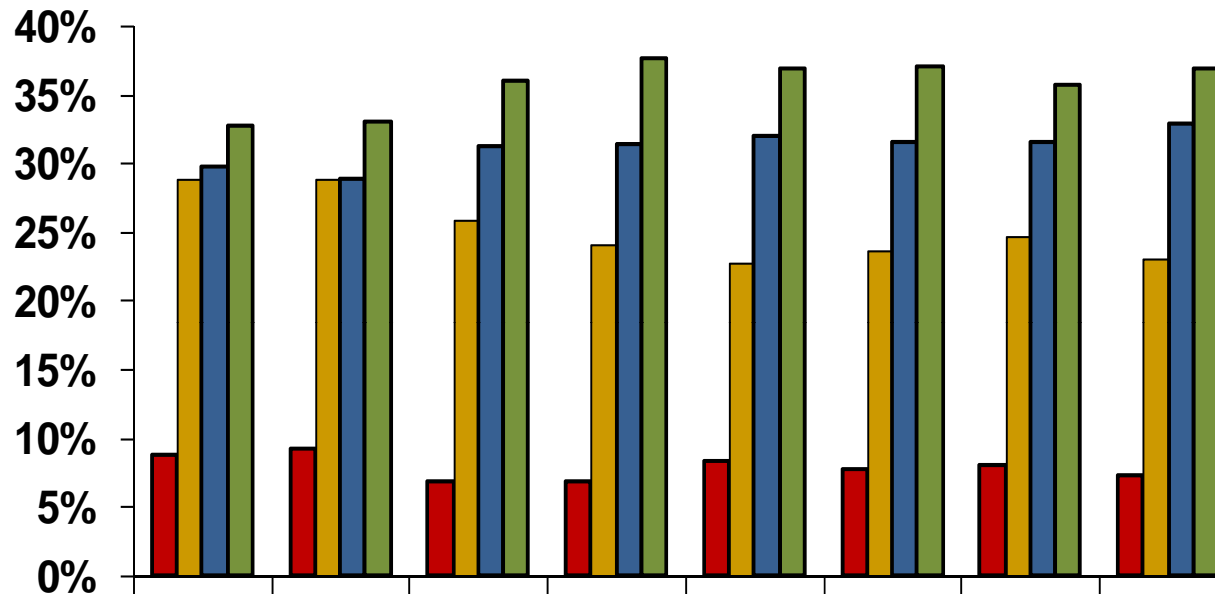
	Fall 2001	Fall 2002	Fall 2003	Fall 2004	Fall 2005	Fall 2006	Fall 2007	Fall 2008
■ 19 or less	29%	29%	31%	31%	32%	33%	32%	33%
■ 20-24	26%	28%	29%	31%	31%	30%	30%	30%
■ 25-29	11%	11%	11%	11%	11%	11%	12%	11%
■ 30-34	8%	8%	8%	7%	7%	7%	7%	7%
■ 35-39	7%	7%	6%	6%	5%	6%	5%	5%
■ 40-49	11%	10%	9%	9%	8%	8%	8%	8%
■ 50+	7%	7%	6%	6%	6%	6%	6%	6%

## Enrollment Day & Evening Classes by Percent of Total Fall 2001 - 2008



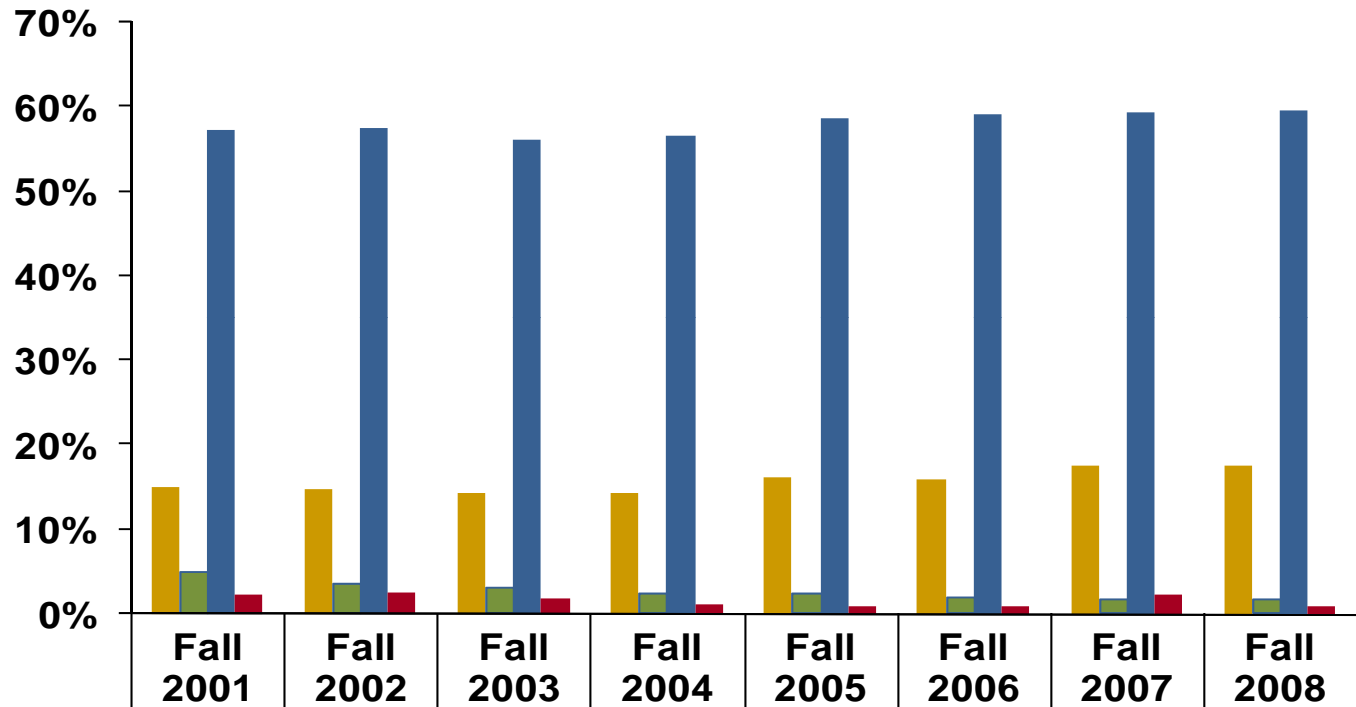
	Fall 2001	Fall 2002	Fall 2003	Fall 2004	Fall 2005	Fall 2006	Fall 2007	Fall 2008
■ Day	71%	70%	70%	72%	73%	75%	72%	71%
■ Evening	27%	25%	25%	23%	22%	20%	22%	29%

## Enrollment by Student Unit Load as Percent of Total Fall 2001 - 2008



	Fall 2001	Fall 2002	Fall 2003	Fall 2004	Fall 2005	Fall 2006	Fall 2007	Fall 2008
■ Non-Credit & 0 Units	9%	9%	7%	7%	8%	8%	8%	7%
■ 0.1 - 5.9	29%	29%	26%	24%	23%	24%	25%	23%
■ 6.0 - 11.9	30%	29%	31%	31%	32%	32%	32%	33%
■ 12.0+	33%	33%	36%	38%	37%	37%	36%	37%

## Fall Enrollment by Class as Percent of Total Fall 2001 - 2008



<span style="color: yellow;">■</span> AA Degree/60+ Units	15%	15%	14%	14%	16%	16%	18%	17%
<span style="color: green;">■</span> BA Degree	5%	4%	3%	2%	2%	2%	2%	2%
<span style="color: blue;">■</span> Freshman	57%	57%	56%	57%	59%	59%	59%	60%
<span style="color: red;">■</span> Unknown	2%	3%	2%	1%	1%	1%	2%	1%

## Enrollment Status as Percent of Total Fall 2001 - 2008

