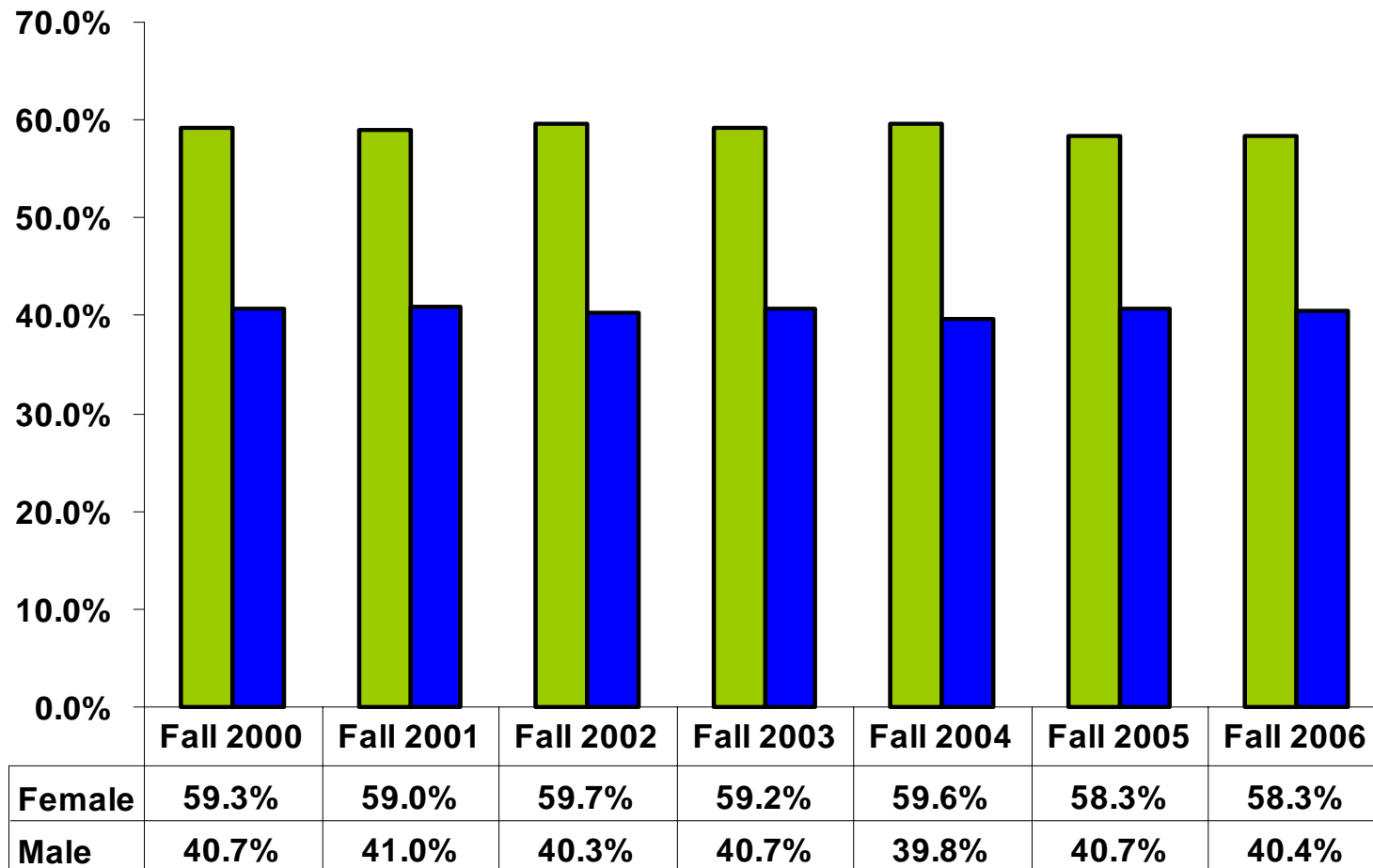
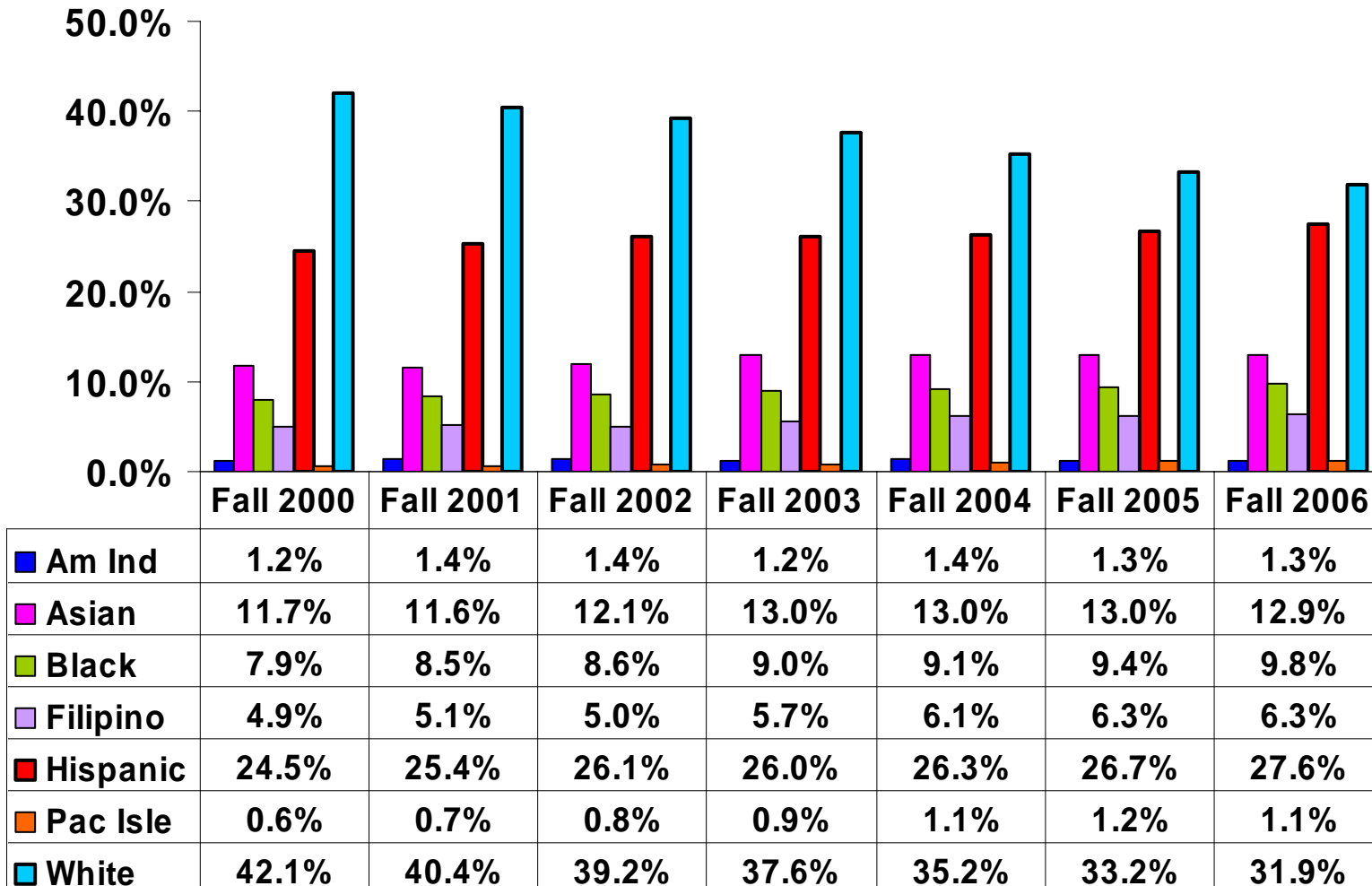


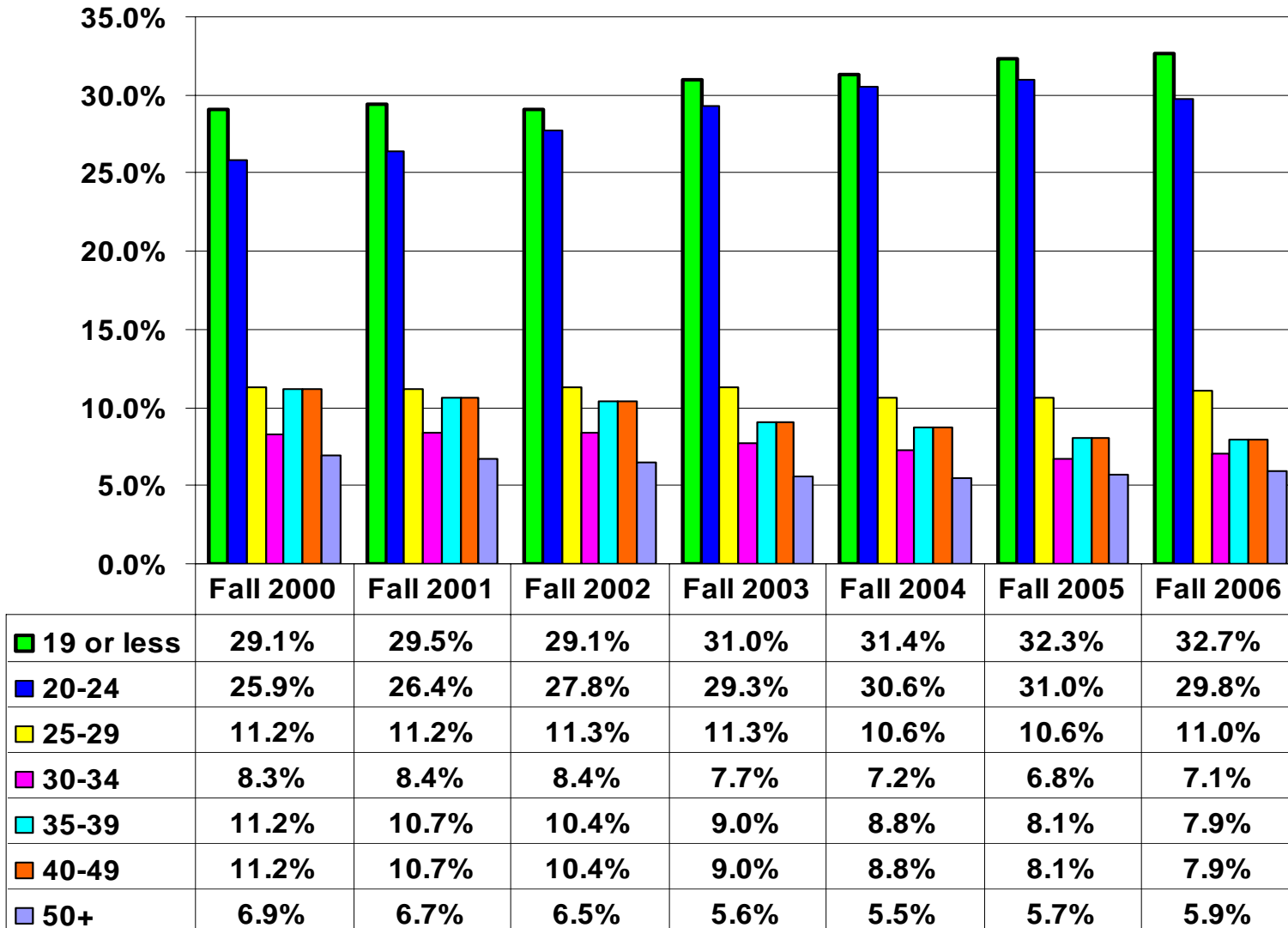
Fall Enrollment by Gender as Percent of Total Fall 2000 - 2006



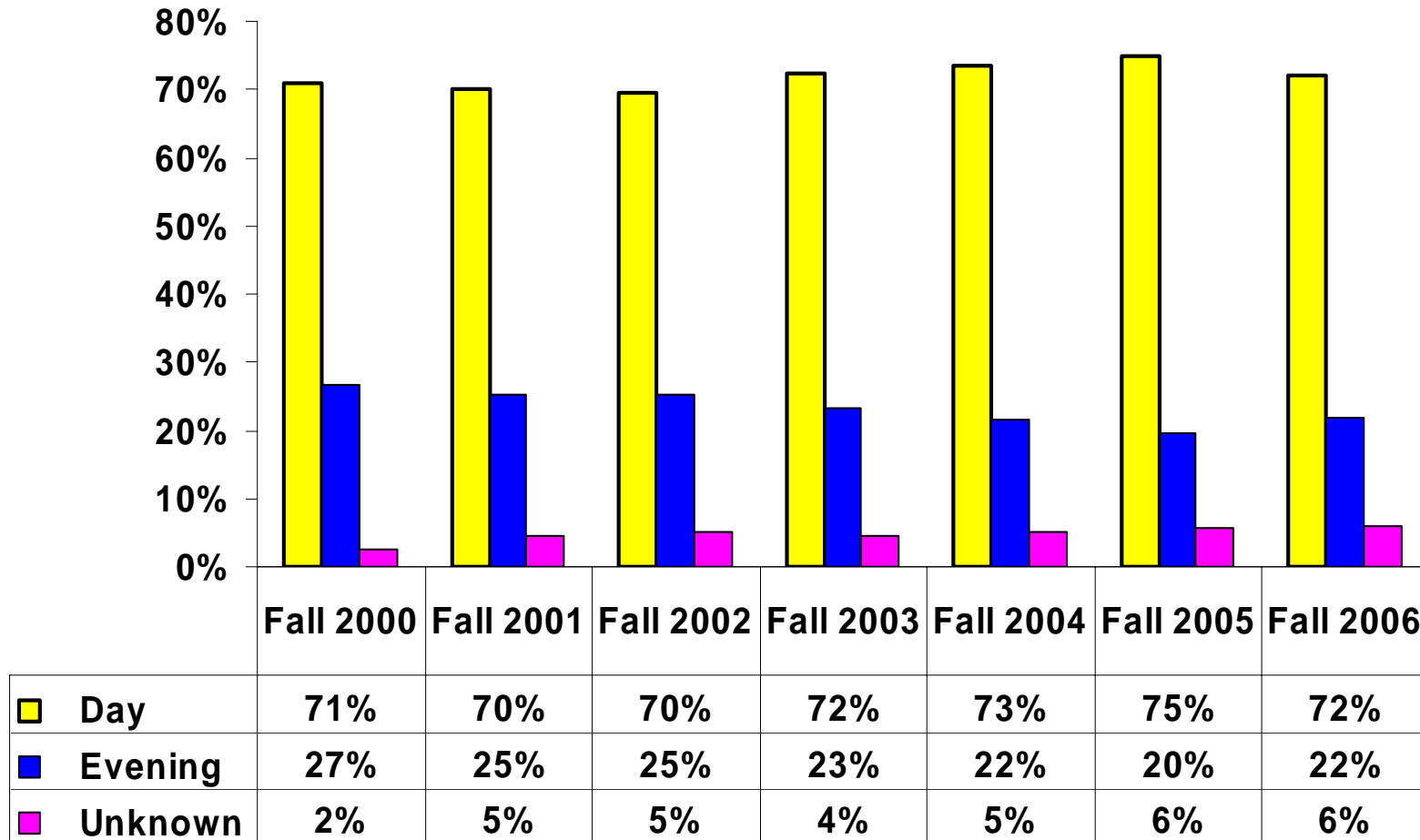
Enrollment by Ethnicity as Percent of Total Fall 2000 - 2006



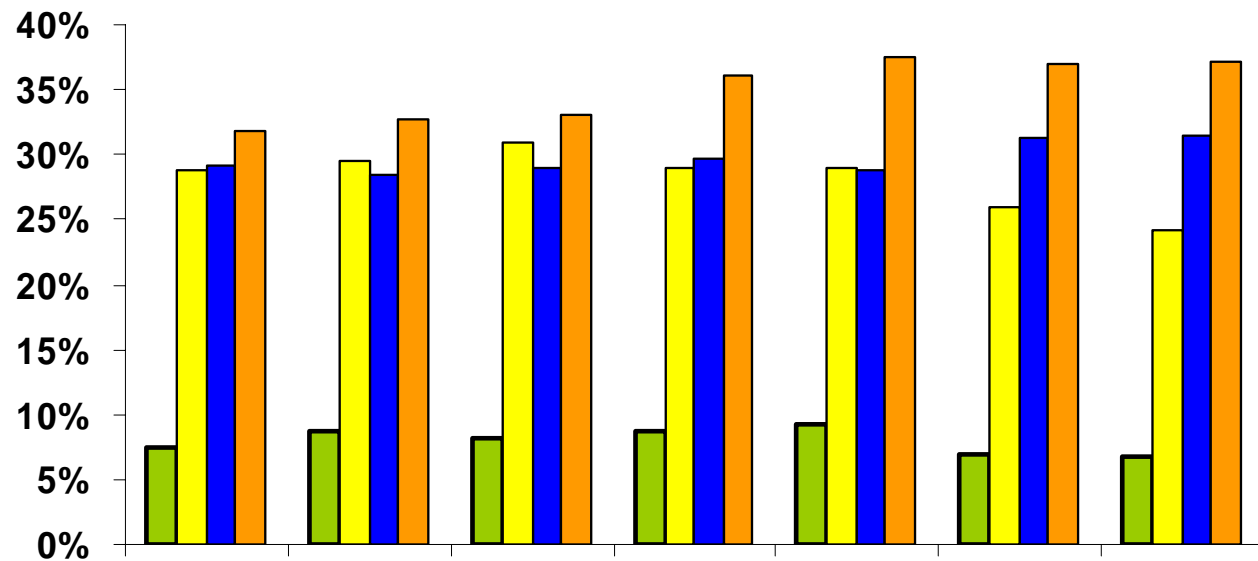
Fall Enrollment by Age as Percent of Total Fall 2000 - 2006



Enrollment Day & Evening Classes by Percent of Total Fall 2000 - 2006

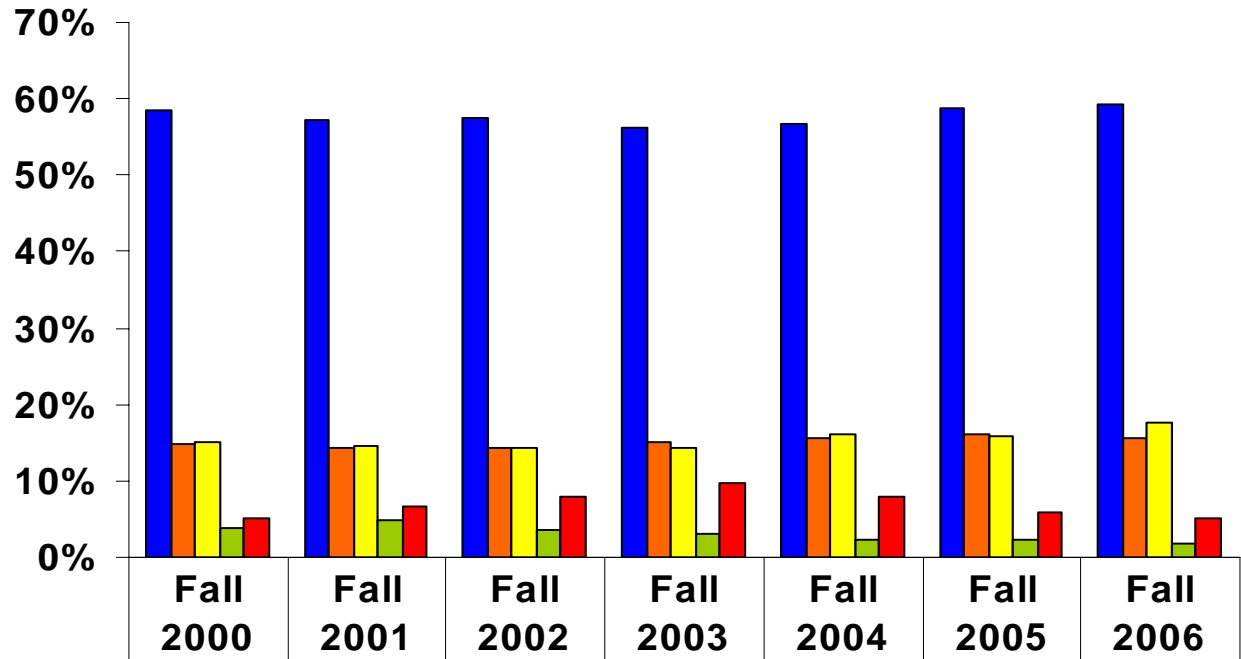


Enrollment by Student Unit Load as Percent of Total Fall 2000 - 2006



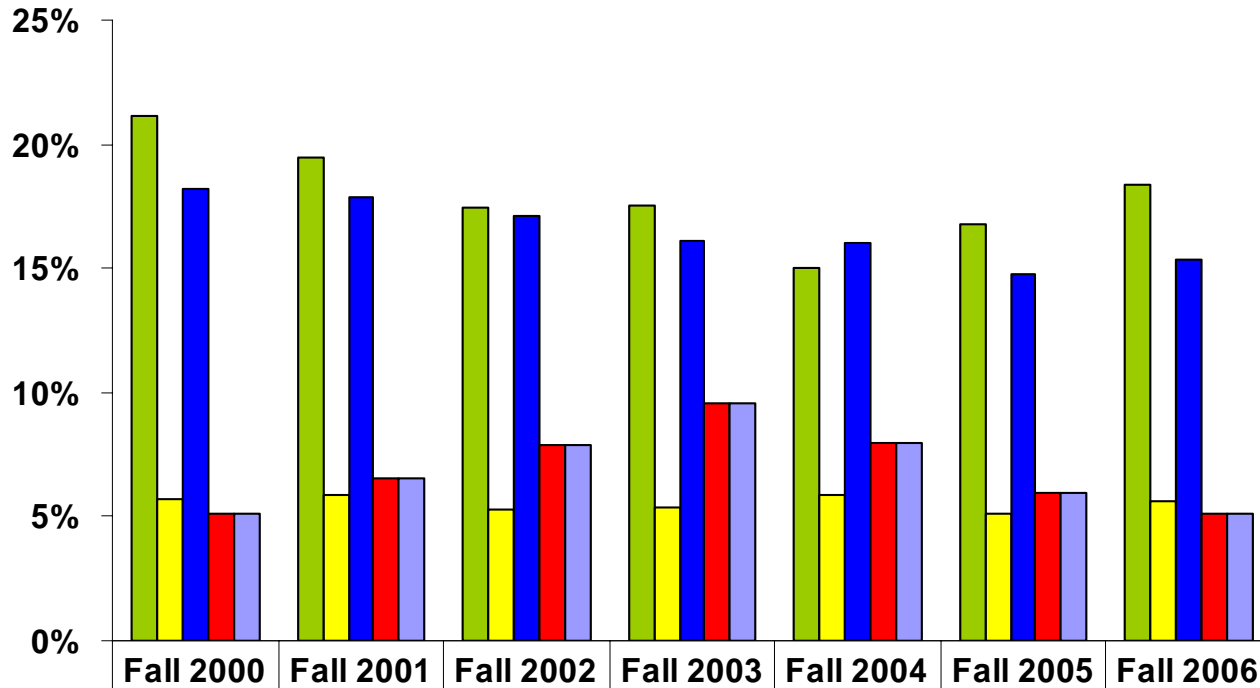
■ Non-Credit & 0 Units	7%	9%	8%	9%	9%	7%	7%
■ 0.1 - 5.9	29%	30%	31%	29%	29%	26%	24%
■ 6.0 - 11.9	29%	28%	29%	30%	29%	31%	31%
■ 12.0+	32%	33%	33%	36%	38%	37%	37%

Fall Enrollment by Class as Percent of Total Fall 2000 - 2006



Freshman	59%	57%	57%	56%	57%	59%	59%
Sophomore	15%	14%	14%	15%	16%	16%	15%
AA Degree/60+ Units	15%	15%	14%	14%	16%	16%	18%
BA Degree	4%	5%	4%	3%	2%	2%	2%
College Early Start-MCHS	5%	7%	8%	10%	8%	6%	5%

Enrollment Status as Percent of Total Fall 2000 - 2006



	Fall 2000	Fall 2001	Fall 2002	Fall 2003	Fall 2004	Fall 2005	Fall 2006
■ First-time Student	21%	19%	17%	18%	15%	17%	18%
■ First-time Transfer	6%	6%	5%	5%	6%	5%	6%
■ Returning Student	18%	18%	17%	16%	16%	15%	15%
■ Continuing Student	5%	7%	8%	10%	8%	6%	5%
■ Not Applicable	5%	7%	8%	10%	8%	6%	5%