

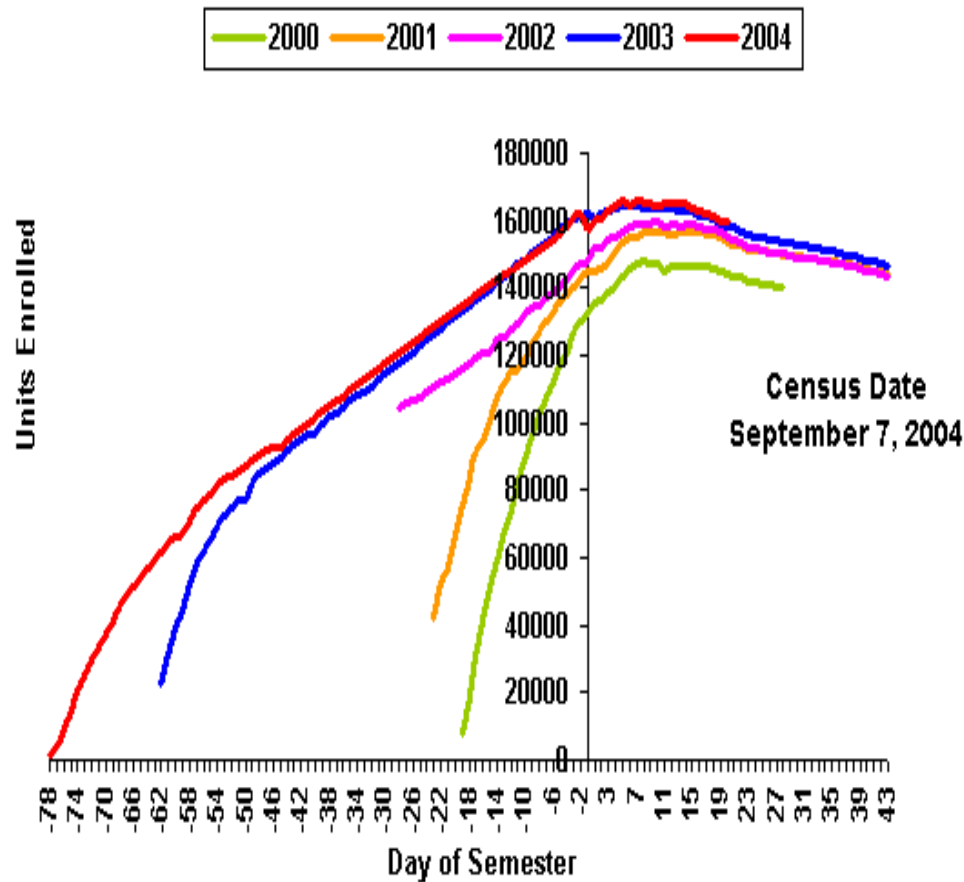
# San Joaquin Delta College Enrollment Trends

**Source Data - CCC Chancellor's Data Mart • Datawarehouse**

**September 2004**

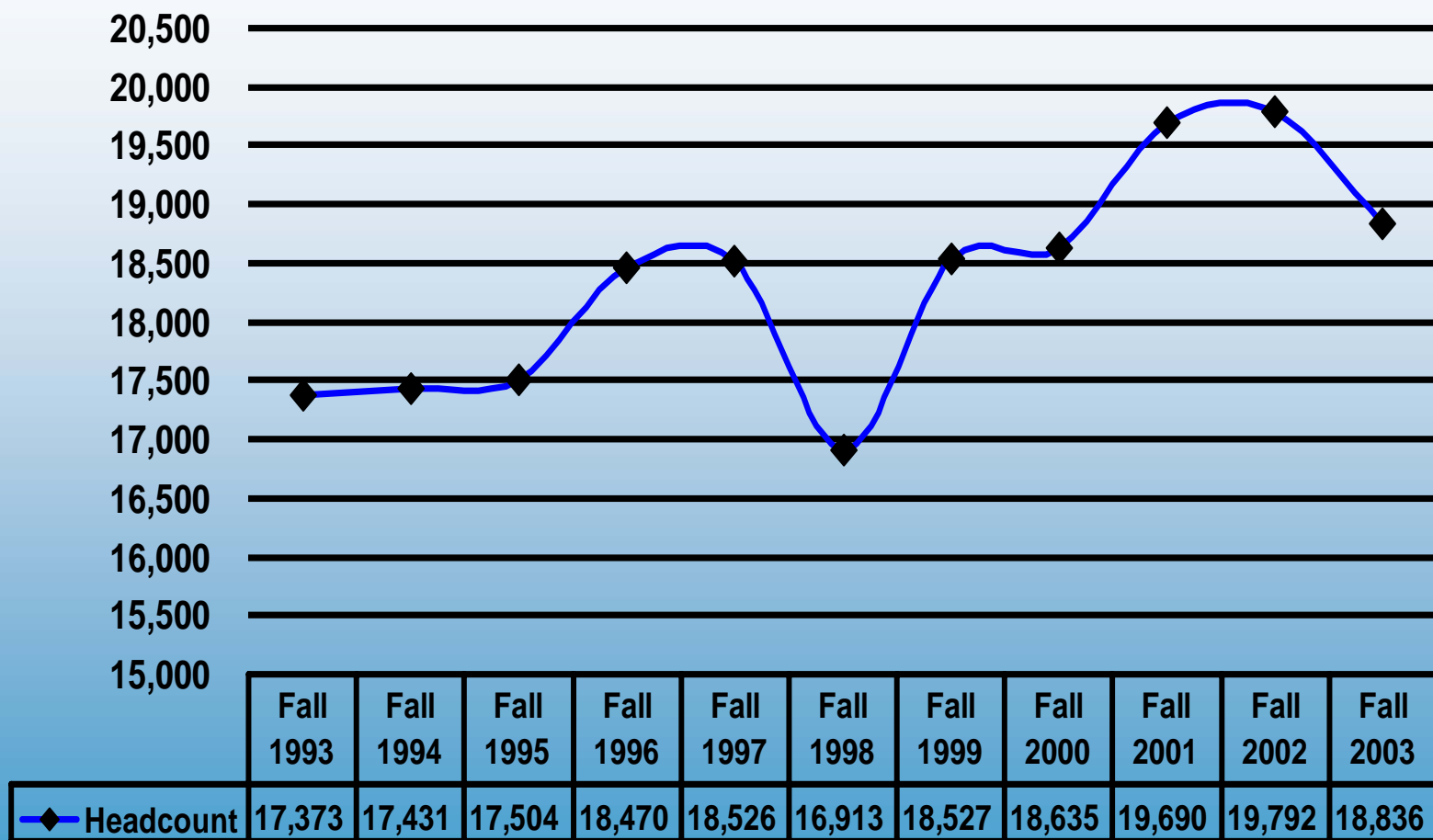
**Fall 2004 Enrollment/Comparisons**  
**As of Monday, September 13, 2004**  
**Opening Day - Monday, August 16, 2004**

Fall Units Comparison Graph - As of Monday, September 13, 2004



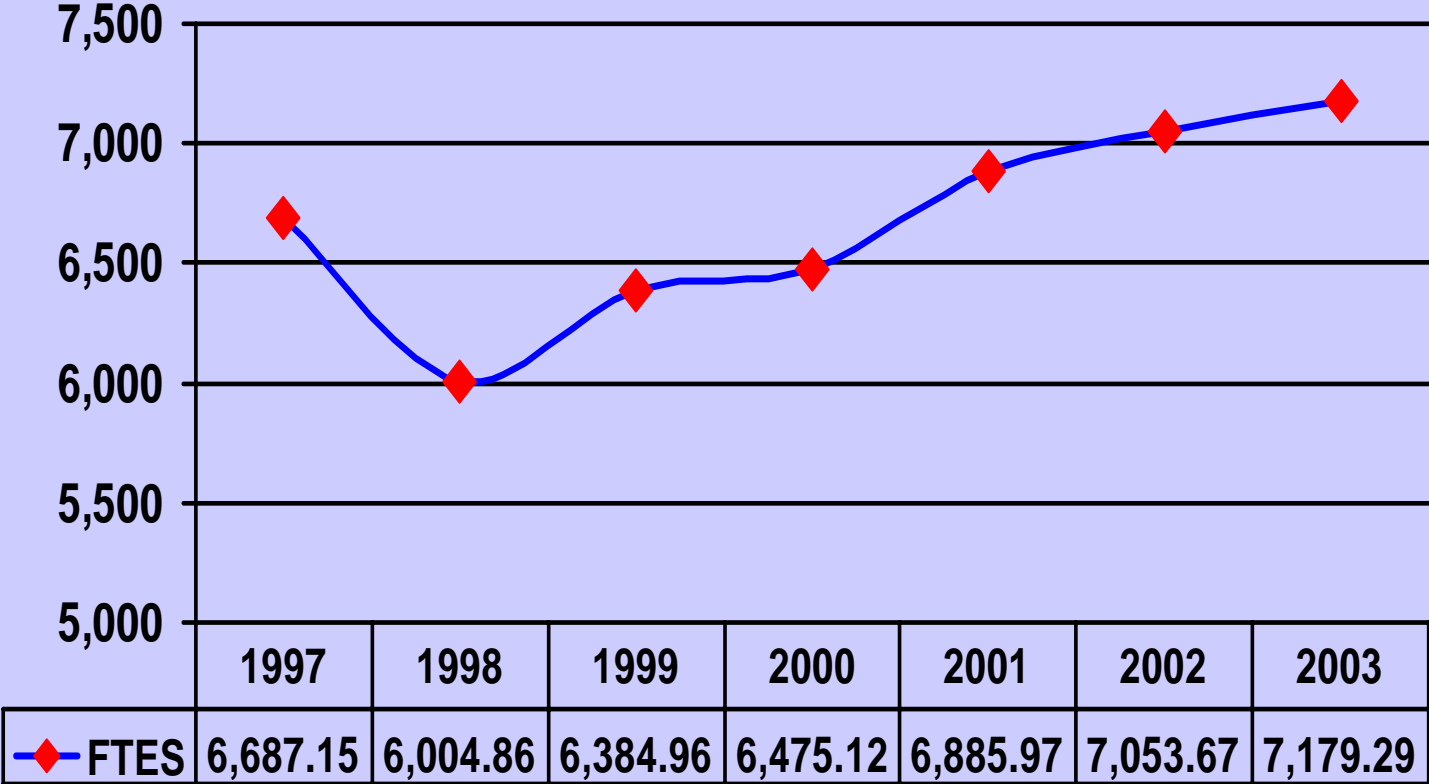
Day of Term = 20	Students	Units
Fall 2004	18,523	159,581.0
Fall 2003	18,844	158,128.0
% Comparisons	Students	Units
2003	- 1.7	0.9
2002	- 5.1	3.2
2001	- 2.9	3.9
2000	2.0	10.9

## Fall Headcount 1993 - 2003



**As of September 13, 2004 – 18,523 ( -1.7% )**

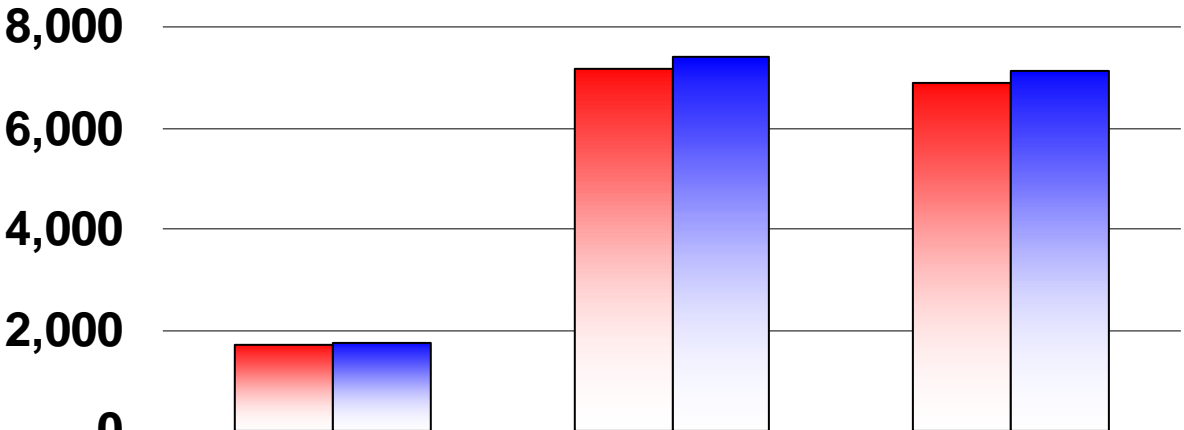
# Fall Trend - FTES



**Estimate Fall 2004 – 7,394.67**

Source: Faculty Load Report

# FTES Actual - 2003-04 & Targets 2004-05

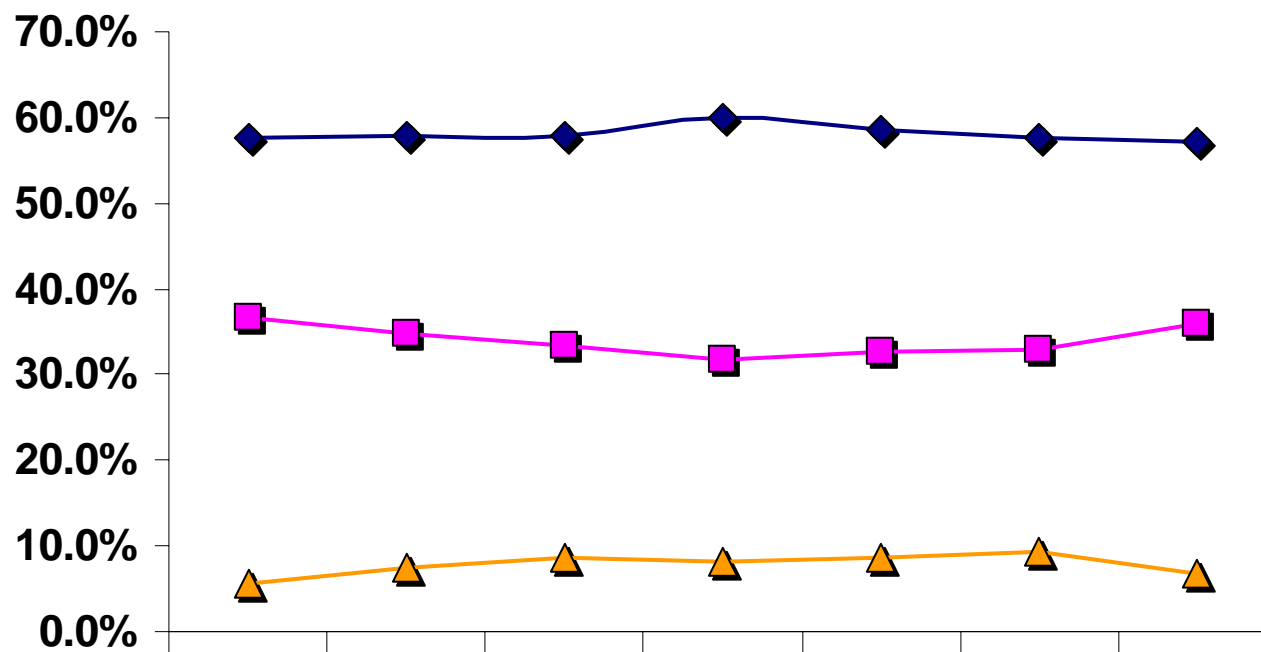


	Summer	Fall	Spring
2003-04 FTES (Actual) ANNUALIZED	1,688	7,179.29	6,876.53
2004-05 FTES (Target) ANNUALIZED	1,739.22	7,394.67	7,117.21

**Total FTES 2003-04 - 15,744.38**

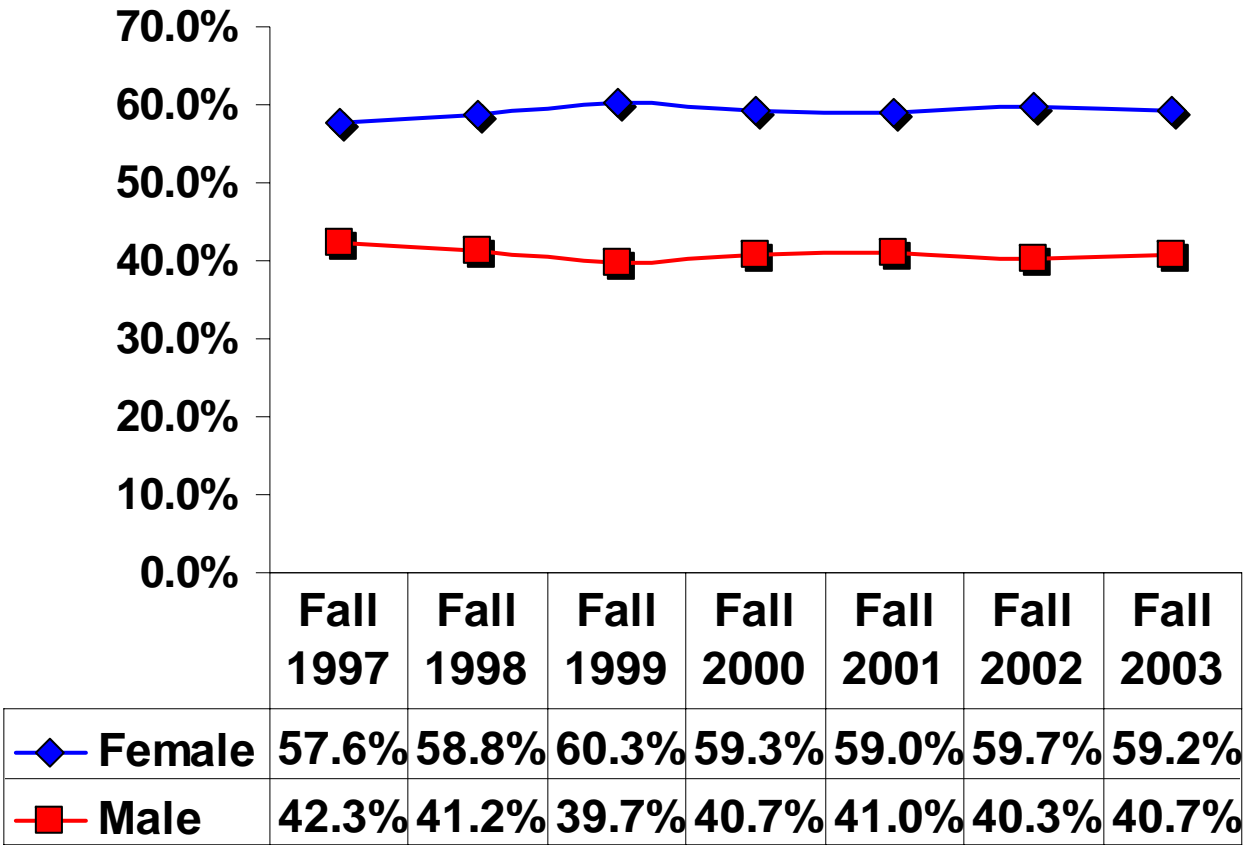
**FTES Target 2004-05 - 16,251.08**

# Student Types 1997 - 2003

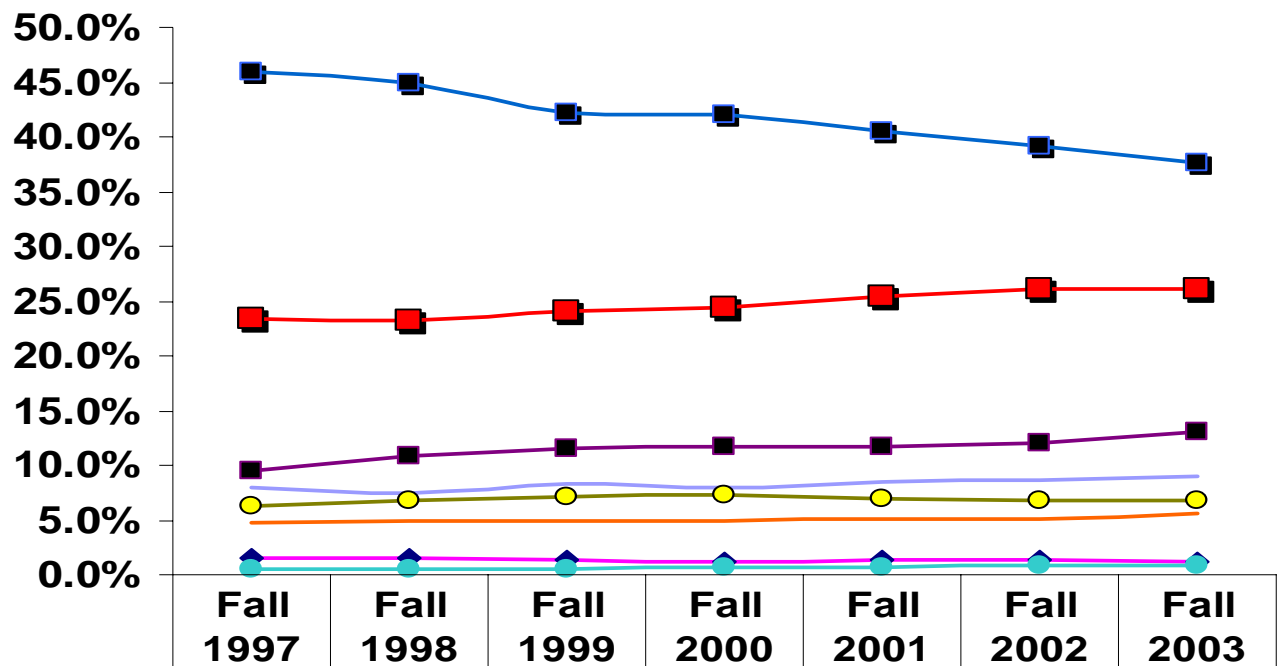


	Fall 1997	Fall 1998	Fall 1999	Fall 2000	Fall 2001	Fall 2002	Fall 2003
◆ Part-Time	57.6%	57.9%	58.0%	59.9%	58.6%	57.7%	57.1%
■ Full-Time	36.7%	34.7%	33.4%	31.8%	32.7%	33.0%	36.0%
▲ Non-Credit & 0	5.7%	7.4%	8.6%	8.3%	8.7%	9.3%	6.9%

## Gender Fall 1997 - 2003

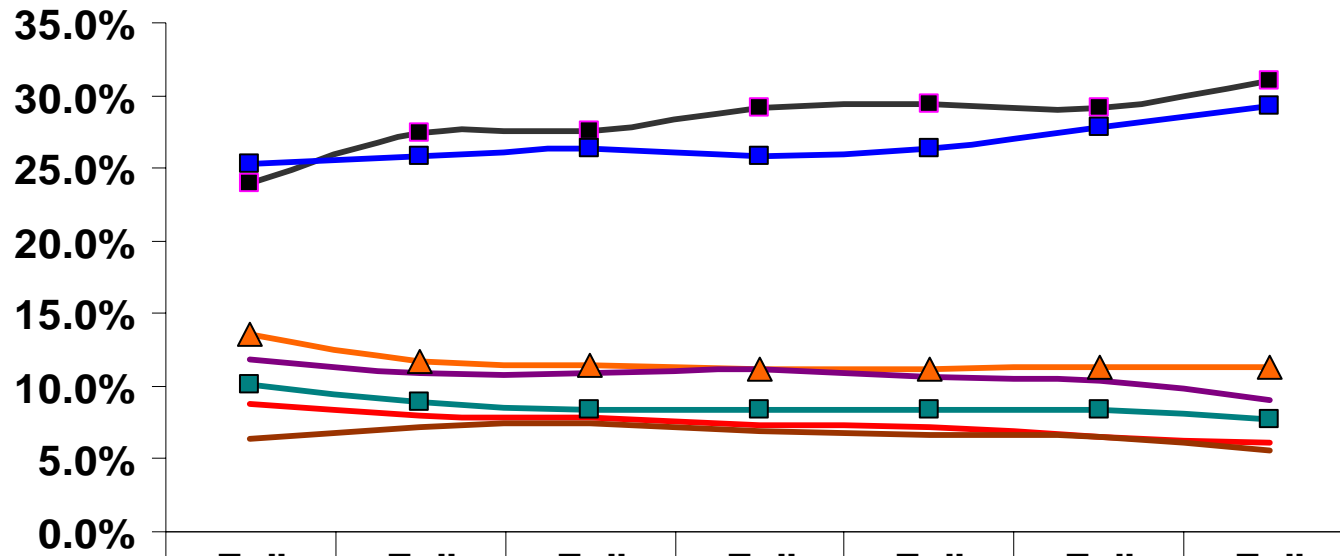


## Ethnicity 1997 - 2003



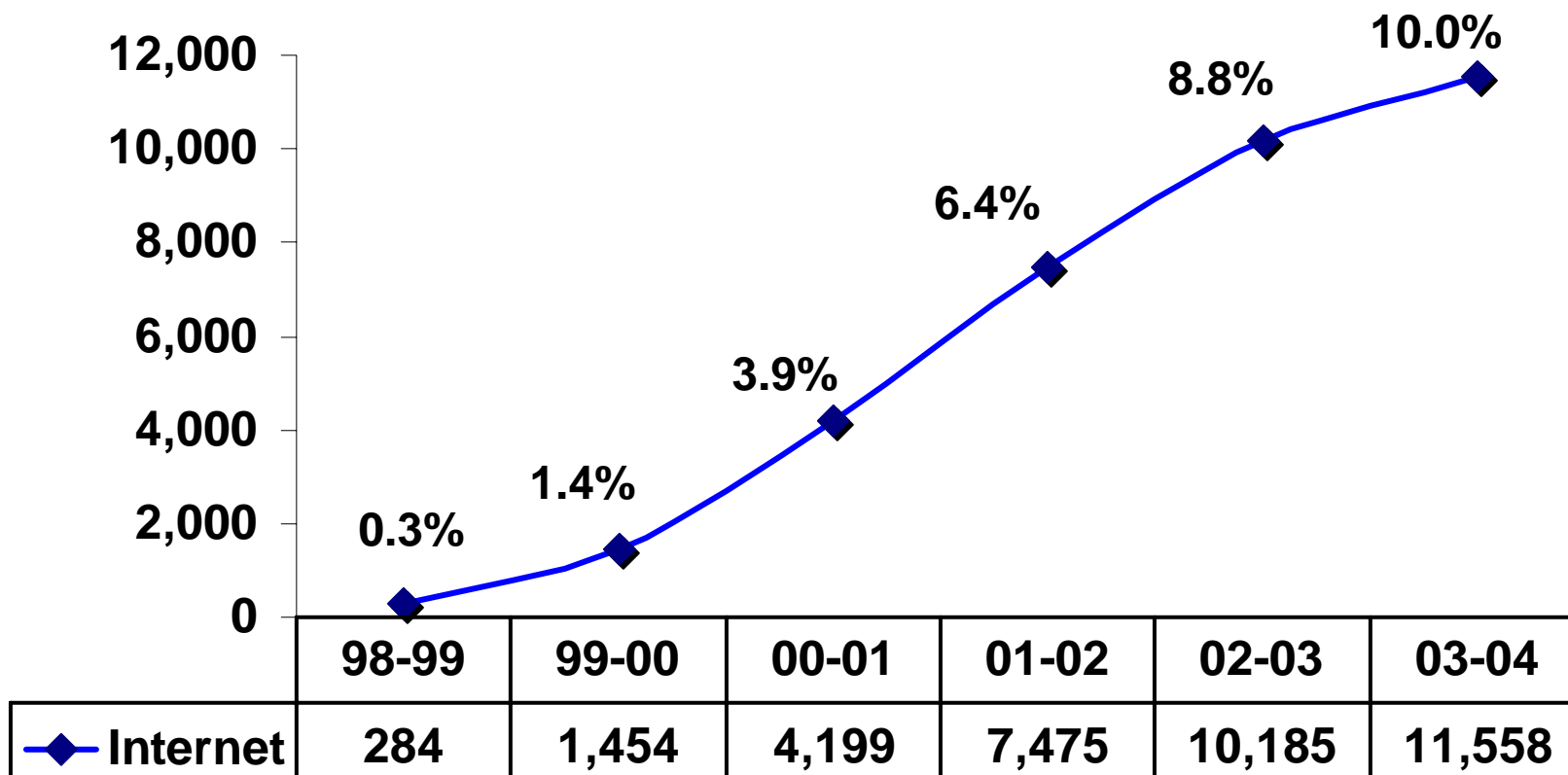
◆ Am Ind	1.6%	1.5%	1.3%	1.2%	1.4%	1.4%	1.2%
■ Asian	9.6%	10.8%	11.5%	11.7%	11.6%	12.1%	13.0%
— Black	8.0%	7.5%	8.4%	7.9%	8.5%	8.6%	9.0%
— Filipino	4.8%	4.9%	5.0%	4.9%	5.1%	5.0%	5.7%
■ Hispanic	23.3%	23.3%	24.1%	24.5%	25.4%	26.1%	26.0%
● Pac Isle	0.5%	0.5%	0.5%	0.6%	0.7%	0.8%	0.9%
■ White	45.9%	44.9%	42.2%	42.1%	40.4%	39.2%	37.6%
● Other/Unknown	6.3%	6.7%	7.0%	7.2%	7.0%	6.8%	6.7%

## Age Groups 1997 - 2003



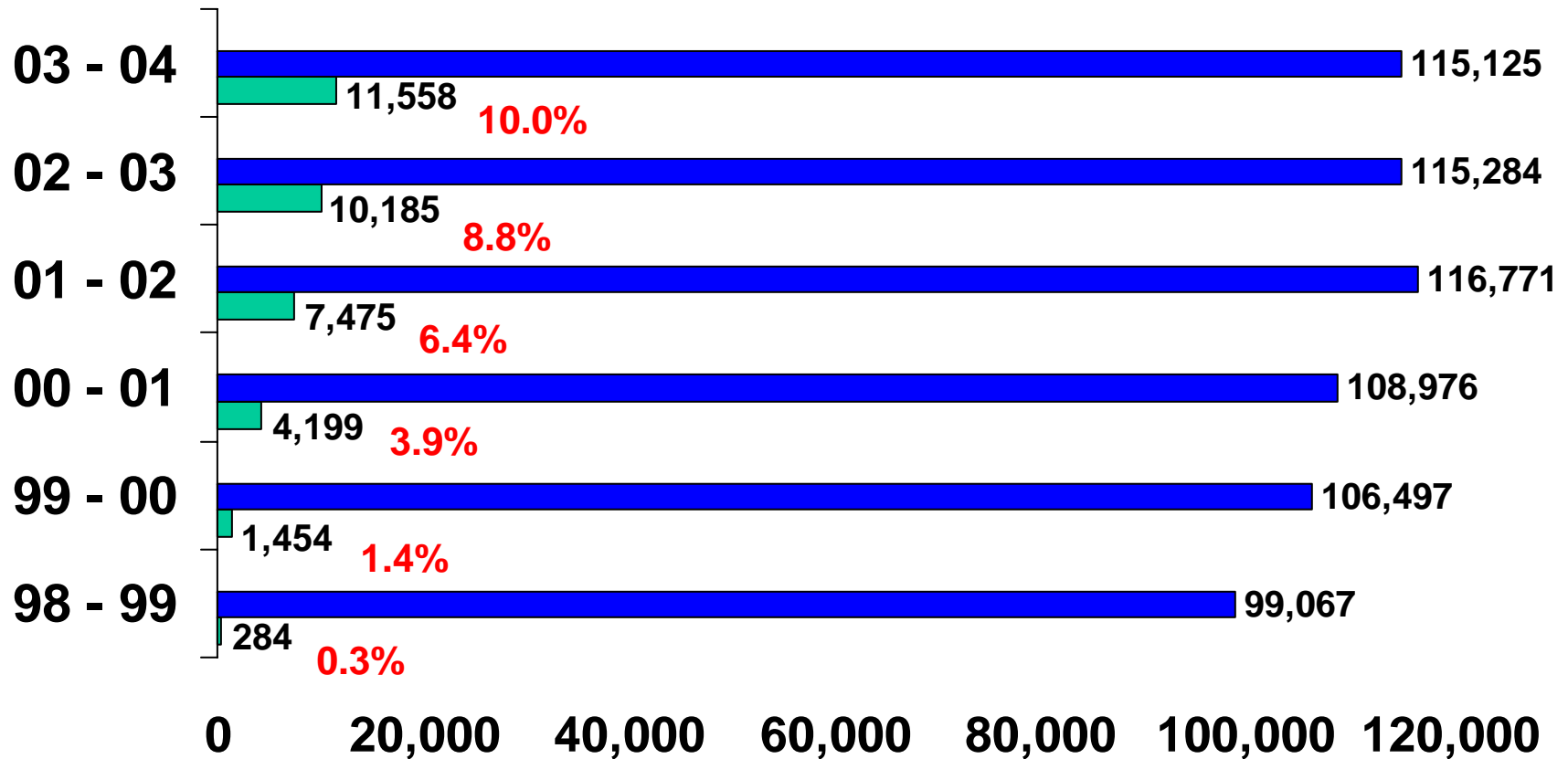
	Fall 1997	Fall 1998	Fall 1999	Fall 2000	Fall 2001	Fall 2002	Fall 2003
■ 19 or less	24.0%	27.4%	27.5%	29.1%	29.5%	29.1%	31.0%
■ 20-24	25.3%	25.9%	26.4%	25.9%	26.4%	27.8%	29.3%
▲ 25-29	13.6%	11.7%	11.5%	11.2%	11.2%	11.3%	11.3%
■ 30-34	10.1%	9.0%	8.4%	8.3%	8.4%	8.4%	7.7%
— 35-39	8.7%	8.0%	7.9%	7.3%	7.2%	6.5%	6.1%
— 40-49	11.9%	11.0%	11.0%	11.2%	10.7%	10.4%	9.0%
— 50+	6.4%	7.2%	7.4%	6.9%	6.7%	6.5%	5.6%

## Internet Enrollment 1998 - 2004



## Internet Course Enrollments as Part of Total Course Enrollments 1998 - 2003

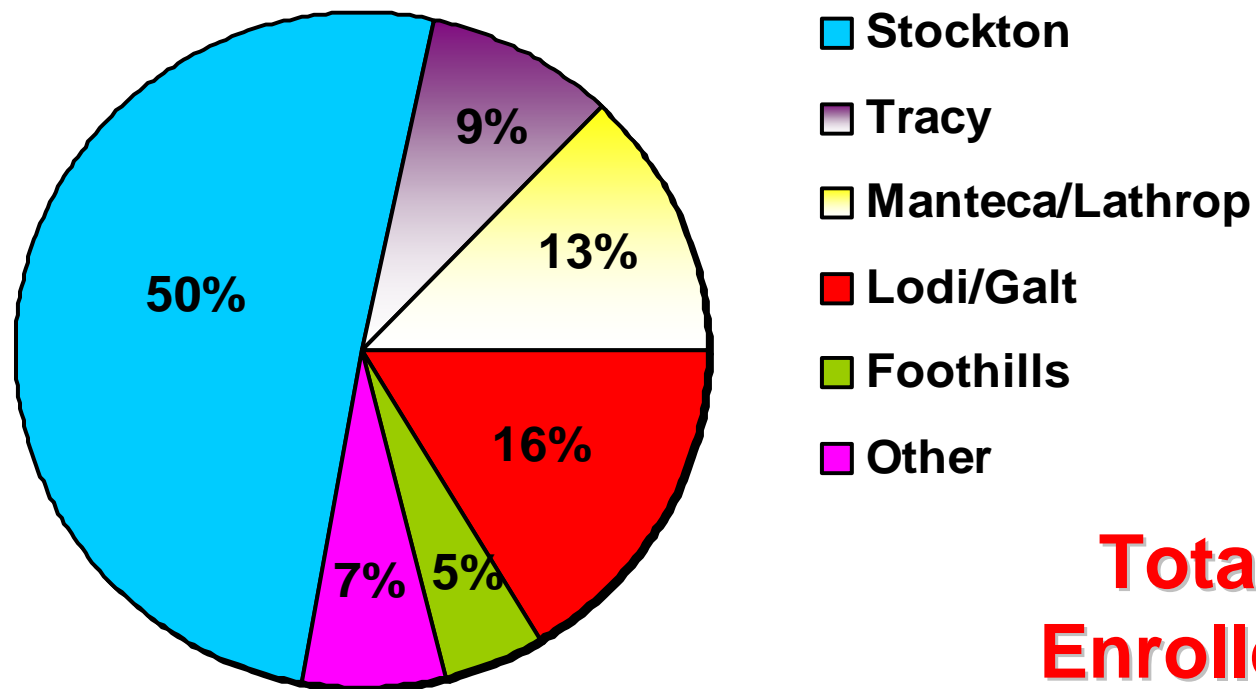
**YEAR**



## Internet Enrollment by Students' City of Residence 2003-2004

**60% of  
enrolled are  
between  
20 - 34  
years age.**

**74.90% are  
women.**



**Total  
Enrolled  
11,558**

Stockton	Tracy	Manteca/Lathrop	Lodi/Galt	Foothills	Other
5,827	1,031	1,485	1,892	545	778

## Fall 2003 Enrollment Top Feeder High Schools

HIGH SCHOOL	HEAD COUNT	COURSE ENROLLMENT	FTES
-------------	------------	-------------------	------

**COMBINED  
FTES**

Stagg	1,311	7,927	1,020.82
Edison	1,124	6,339	853.58
Franklin	1,126	6,420	854.71
Stockton Adult School	209	1,188	176.82
Stockton Unified	196	1,146	145.68

**3,051.61**

Tokay	1,117	6,735	880.35
Bear Creek	1,011	6,489	835.44
Lodi	929	5,544	729.15
Liberty Continuation	201	969	136.96
Middle College	260	1,299	153.25

**2,941.02**

## Top Feeder High Schools - Continued

HIGH SCHOOL	HEAD COUNT	COURSE ENROLLMENT	FTES
East Union	559	3,576	456.79
Manteca	433	2,325	303.62
Sierra	291	1,887	240.26
Lincoln	1,155	7,320	980.65
Tracy Joint Union	504	2,930	378.25
Merrill West	417	2,818	357.09

**COMBINED  
FTES**

**1,000.67**

**980.65**

**735.34**

## Additional Top Feeder High Schools

HIGH SCHOOL	HEAD COUNT	COURSE ENROLLMENT	FTES
St. Mary's	475	3,252	411.36
San Joaquin County	426	2,396	310.46
Galt	278	1,578	205.87
Linden	348	1,977	262.20
Calaveras High	197	959	133.32

# San Joaquin Delta College Enrollment Trends

**Source Data - CCC Chancellor's Data Mart •  
Datawarehouse**

**September 2004**