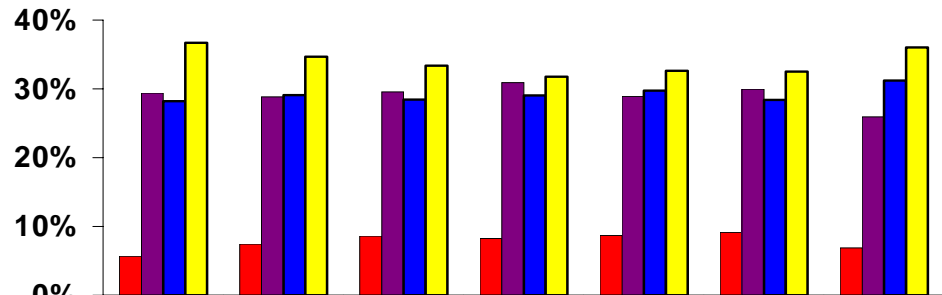


Part One – Student Access**Unit Loads of Students**

The decline in daytime enrollments parallels a slight drop in students carrying a full-time load of courses (Figure 9). Defining full-time students as those enrolling in 12 units or more, this portion of the College population showed a decline during the period fall 1997 to 2002. Fall 2003 reflects a notable increase from those periods. The class loads taken by students at the College was on a downward trend throughout the economic boom of the late 1990s. The slight rebound of full-time students in fall 2001 may be a harbinger for increased shares of full-time students as the College expects a wave of “baby boom echo” students to be graduating from area high schools in the 2000-2010 period.

Part One – Student Access

Figure 9
Enrollments by Student Unit Load
1997-2003



	Fall 1997	Fall 1998	Fall 1999	Fall 2000	Fall 2001	Fall 2002	Fall 2003
■ Non-Credit & 0 Units	6%	7%	9%	8%	9%	9%	7%
■ 0.1 - 5.9	29%	29%	30%	31%	29%	30%	26%
■ 6.0 - 11.9	28%	29%	28%	29%	30%	28%	31%
■ 12.0+	37%	35%	33%	32%	33%	33%	36%