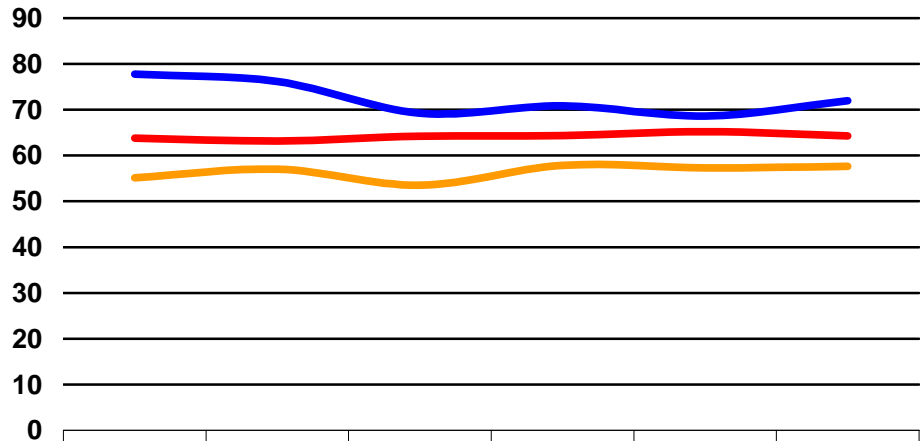


Part Two – Student Success**Course Completion Rates in Transfer,
Vocational, and Basic Skills Courses**

Figure 19 provides data on course completion rates in broad categories of courses identified by the Chancellor's Office in its tracking of Partnership for Excellence goals. The data suggest that completion rates are highest in vocational courses, and lowest in basic skills courses, while transfer course completion rates hover between the two. Like the overall figures reported earlier, the College's trends typically fall below average and below goals set by the Chancellor's Office for improvement under the Partnership program. The one exception is in the Basic Skills area, where rates for the College exceed goals established under the Partnership for Excellence (despite the rate being below 60 percent). For a more detailed discussion of these data, see the College's *District Self-Assessment of Partnership for Excellence Funding*, January 2002 (<http://www.deltacollege.edu/div/planning/PLANNINGINDEX/PFE.html>).

Part Two – Student Success

Figure 19
Course Completion Rates in Transfer, Vocational,
and Basic Skills Courses, 1996-02



| | 1996-97 | 1997-98 | 1998-99 | 1999-00 | 2000-01 | 2001-02 |
|-----------------------------|---------|---------|---------|---------|---------|---------|
| Transfer Courses | 63.78 | 63.14 | 64.19 | 64.39 | 65.22 | 64.26 |
| Vocational Courses | 77.78 | 76.16 | 69.28 | 70.88 | 68.61 | 71.98 |
| Basic Skills Courses | 55.11 | 56.99 | 53.51 | 57.86 | 57.28 | 57.64 |