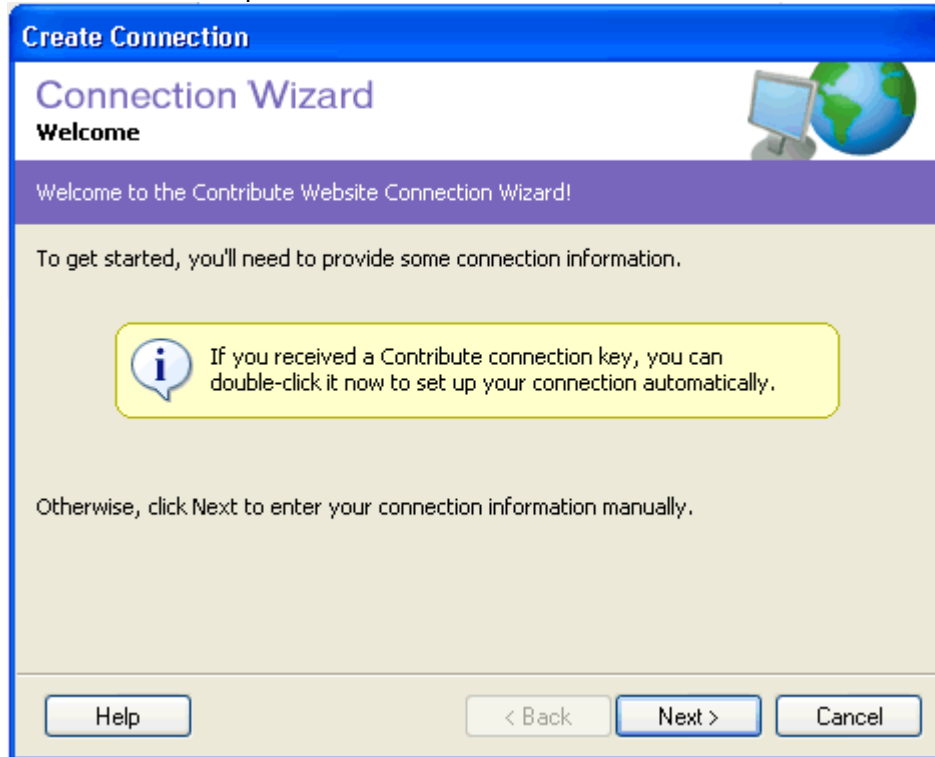
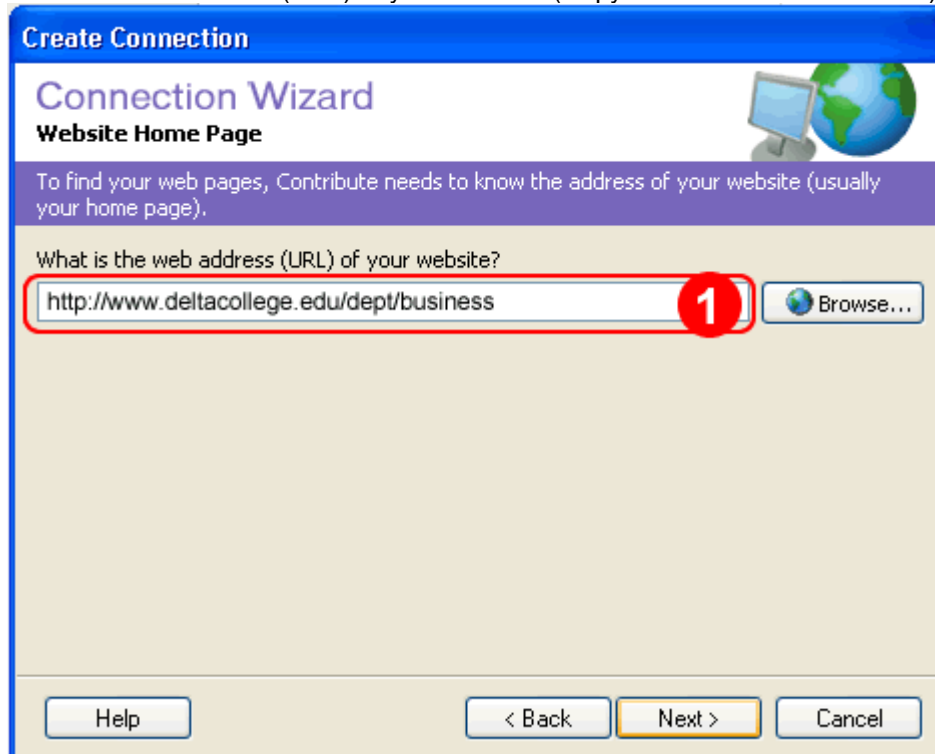


Contribute3 - Creating A New Connection

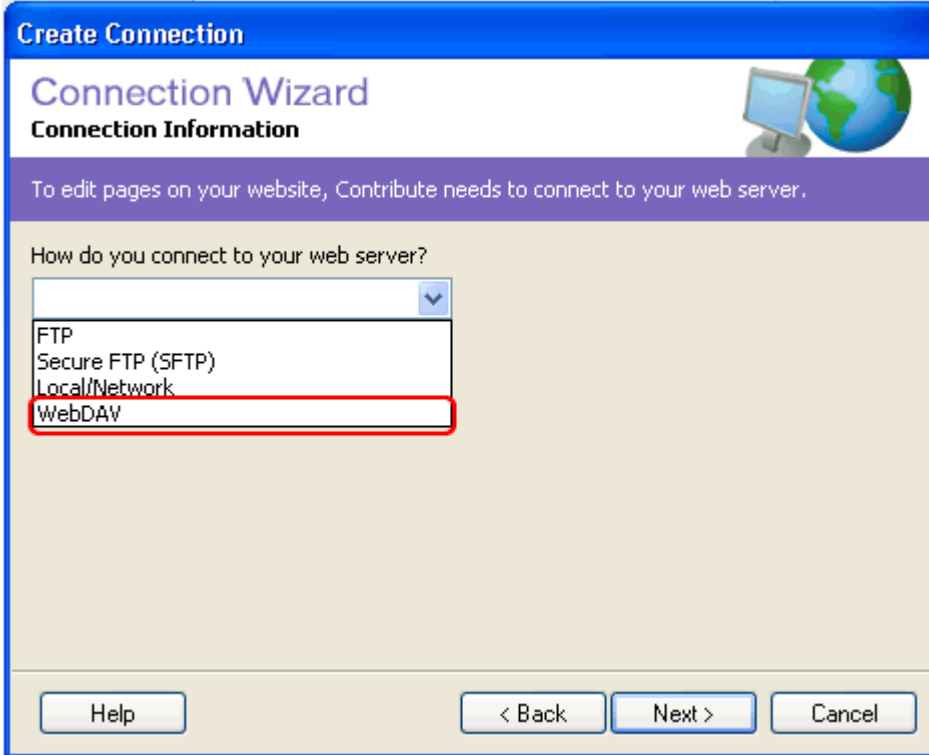
1. Launch Contribute3: Start Menu or Finder > Applications > Macromedia > Contribute3
2. Click on "Create A Connection" in the document window
3. Click "Next" and complete the Contribute Connection Wizard.



4. Enter the Web Address (URL) of your Website (Copy & Paste is recommended)



5. Select WebDAV for your connection type.



Create Connection

Connection Wizard

Connection Information

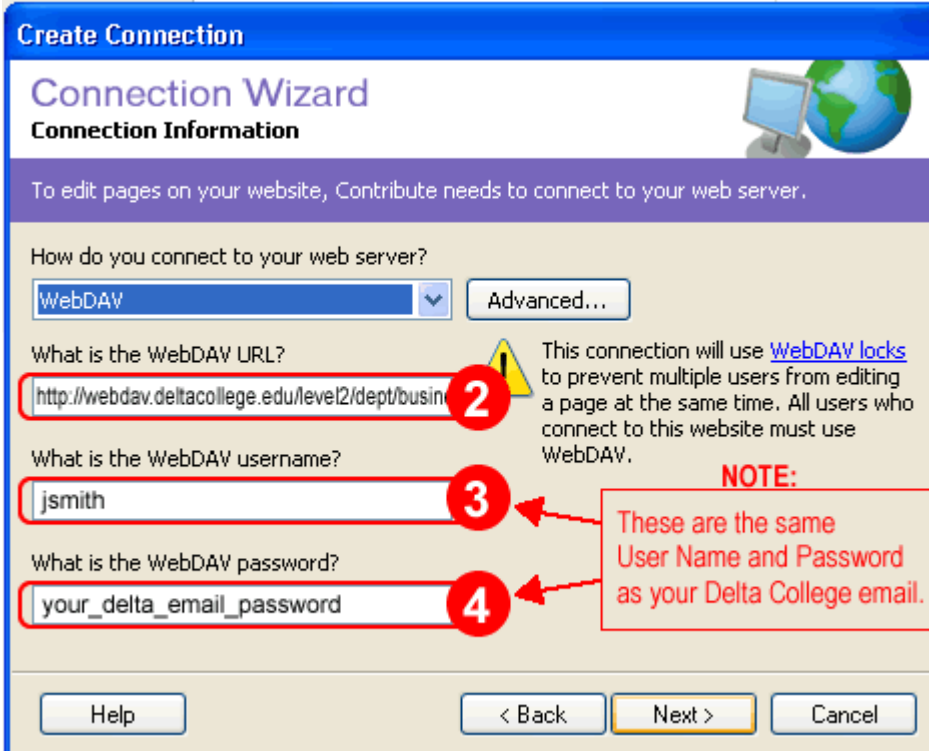
To edit pages on your website, Contribute needs to connect to your web server.

How do you connect to your web server?

FTP
Secure FTP (SFTP)
Local/Network
WebDAV

Help < Back Next > Cancel

6. Enter your WebDAV URL (Copy & Paste Recommended)
Enter your Delta User Name (example: jsmith)
Enter your WebDAV Password (same as your Current Delta Email Password)



Create Connection

Connection Wizard

Connection Information

To edit pages on your website, Contribute needs to connect to your web server.

How do you connect to your web server?

WebDAV Advanced...

What is the WebDAV URL?
2 http://webdav.deltacollege.edu/level2/dept/busin

What is the WebDAV username?
3 jsmith

What is the WebDAV password?
4 your_delta_email_password

This connection will use [WebDAV locks](#) to prevent multiple users from editing a page at the same time. All users who connect to this website must use WebDAV.

NOTE:
These are the same User Name and Password as your Delta College email.

Help < Back Next > Cancel

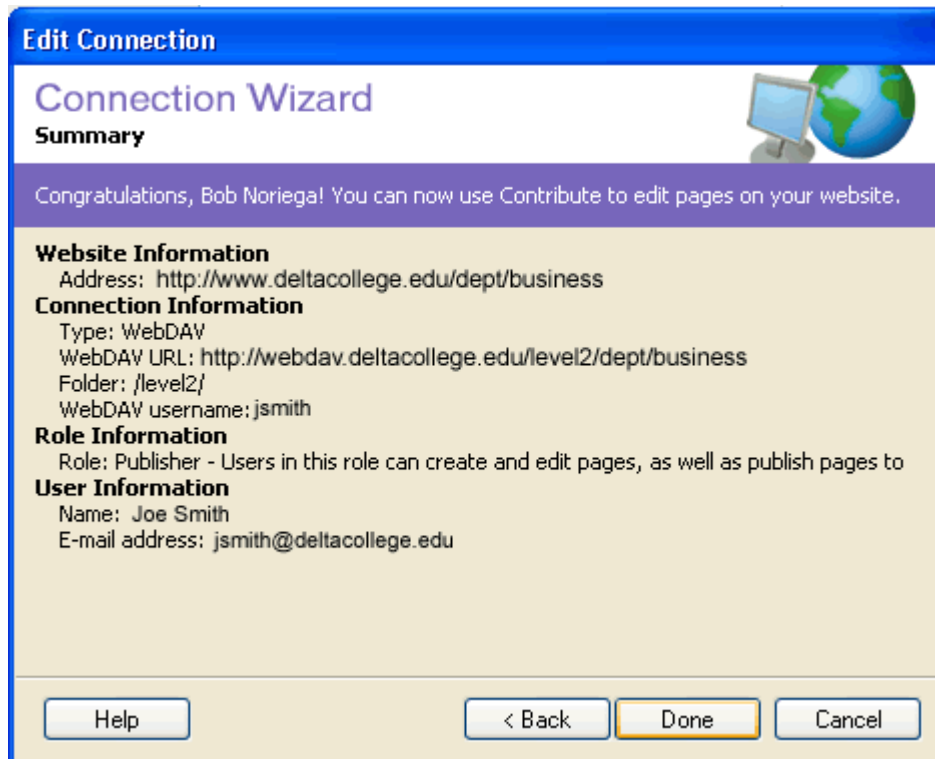
7. Enter your Full Name and your Delta e-mail address

The screenshot shows a dialog box titled "Edit Connection" with a blue header. Below the header is the "Connection Wizard" title and a "User Information" section. A purple bar contains the text: "Contribute uses this information to identify you to any other Contribute users when you edit pages on your website." Below this, there are two text input fields. The first is labeled "What is your full name?" and contains "Joe Smith". The second is labeled "What is your e-mail address?" and contains "jsmith@deltacollege.edu". At the bottom, there are four buttons: "Help", "< Back", "Next >", and "Cancel".

8. Select Publisher Role

The screenshot shows a dialog box titled "Edit Connection" with a blue header. Below the header is the "Connection Wizard" title and a "Role Information" section. A purple bar contains the text: "To determine which pages you're allowed to edit, Contribute needs to know which role you are assigned to. For assistance, contact the administrator: etakahashi@deltacollege.edu." Below this, there are two columns. The left column is labeled "What role are you assigned to?" and contains a list box with three options: "Writer", "Publisher" (which is selected), and "New Role". The right column is labeled "Role description:" and contains the text: "Users in this role can create and edit pages, as well as publish pages to the website." At the bottom, there are four buttons: "Help", "< Back", "Next >", and "Cancel".

9. Click Done



10. Contribute will connect to your website displaying an "Edit" button in the Tool Bar.

For connection support please contact Web Services at webserviceshelpticket@deltacollege.edu or call (209) 954-5300.