

# Helping Students Succeed: Supplemental Instruction

SPRING 2012

BIOLOGY 22 (MEDICAL MICROBIOLOGY)

San Joaquin Delta College ♦ Library, Learning Resources and Language Arts Division

## What is Supplemental Instruction?

Have you ever taken and passed a class but wondered if you could have done even better? Or have you struggled with a course because you didn't have someone to study with? Delta College has just the program for you! The College is offering Supplemental Instruction (SI) for selected courses this semester, and the good news is...your **Medical Microbiology (Bio 22)** class is one of them!

SI is a nationally recognized academic support program designed to help you become a better student. SI uses peer learning strategies to help students enhance their knowledge and improve their confidence in their courses.

Weekly SI sessions are held outside of class and facilitated by a student who was success-

ful the course in a previous semester. SI is a free service available to all students enrolled in your **Medical Microbiology** course. Participation in SI is completely voluntary, but we encourage you to take advantage of this opportunity to meet and study with your peers and SI leader.

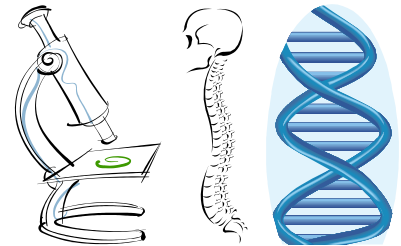
### How can SI help you?

- SI sessions allow you to discuss concepts from class with other students and an SI leader
- SI helps you learn new ways to solve problems
- SI helps you improve your learning strategies and study skills
- Students who participate in SI perform better their classes



**Your SI Leader:**  
**Rudy Alvarado Jr.**

**Interested in SI? Stop by the Math Science Learning Center, Shima 217 for more information or go to the SI website listed below.**



## Spring 2012 - SI Sessions for **Medical Microbiology (Professor Hewette)**

### Sessions Schedules:

**Mondays, 8:00 am —11:00 am**  
**Tuesdays, 9:00 am —12:00 pm**

**Math Science Learning Center, Shima 217**



For the most current information about SI Sessions please visit the SI website at  
**[deltacollege.edu/dept/tutor/SupplementalInstruction.html](http://deltacollege.edu/dept/tutor/SupplementalInstruction.html)**

**Attend a  
session!**

## How Does SI Help Delta College Students?

Office of Planning Research and Institutional Effectiveness

Delta College began offering SI to students in social science and science courses in spring 2008. Since that time, the program has expanded to include several sections of biology, chemistry, history and other science and social science courses.



Each semester, the Col-

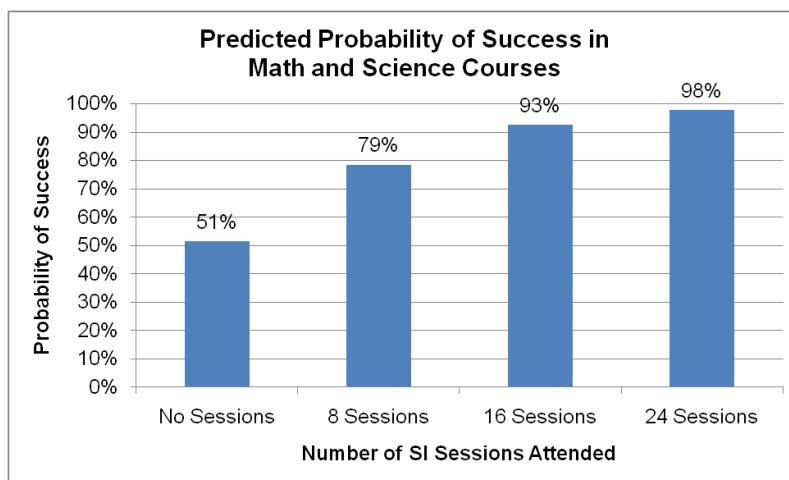
lege's research office conducts studies to examine the impact of SI on student success. The results of data collected and SI studies have consistently shown that **students who regularly participate in SI perform better than students who do not**, even when you factor in previous student performance, assessment levels, tutoring, and other important student characteristics. The results are particularly positive for students in science and social science courses.

The chart below shows the estimated

chance of passing a math or science course for students who attend roughly one SI session per week, one session every other week or no sessions at all.



As the chart shows, students who attend eight sessions (roughly one session every other week) dramatically increase their chances of passing the course (from 51% to 79%). Students who attend one session every week have a 93% chance of passing the course. Those are pretty good odds!



## Delta College Resources

The College has additional resources available to help students succeed and reach their educational goals.

### Tutoring

Free tutoring is available on a first-come, first-served basis to Delta College students enrolled in the current semester. Reading and writing tutoring is available at the **Reading/Writing Learning Center** in Holt 201. For information, call 209-954-5657 or visit the Center's web site at [www.deltacollege.edu/dept/rwlcenter](http://www.deltacollege.edu/dept/rwlcenter). Tutoring in math and science is available at the **Math/Science Learning Center** in Shima 217. Call 209-954-5542 or visit the Center's web site at [www.deltacollege.edu/dept/tutor](http://www.deltacollege.edu/dept/tutor). Tutoring in other subjects is available in the Content Tutoring Center on the first floor of Goleman Library.

### Counseling

Free counseling services are available to students through the College's Guidance and Counseling department. To make an appointment with a counselor, visit the Counseling Appointment web page at [www.deltacollege.edu/dept/guidance/appointments.html](http://www.deltacollege.edu/dept/guidance/appointments.html).



The College offers several other special programs, services and resources for students. Visit the College's main web site and click on [Services and Support](#) for more information.