

# MEASUREMENT

Measure L Bond Program  
Citizens' Oversight  
Committee

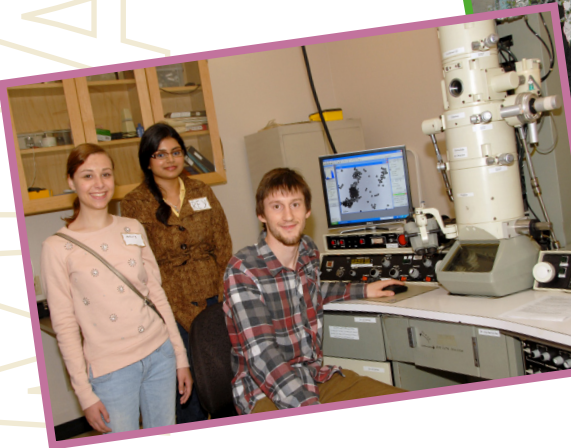


Annual Report - 2013/2014



San Joaquin  
Delta College







Goleman Renovation-2010



## In November 2003 the San Joaquin Delta Community College District's Board of Trustees placed Measure L, a \$250-million bond, on the March 2, 2004 ballot.

Measure L is the District's first bond measure since 1969. The bond measure represents a large portion of the District's \$344-million 2010 Facilities Master Plan. The purpose of the bond measure is to renovate, upgrade and expand buildings, many of which are well over 30 years old, and to support site acquisition and development of educational centers to provide access to Delta College throughout the region.

### Role of the Oversight Committee

As provided in California Education Code Section 15278, a Citizens' Oversight Committee was formed by the San Joaquin Delta Community College District's Board of Trustees.

The primary role of the Committee is to inform the public concerning the District's expenditure of revenues received from the sale of bonds authorized by the voters in the March 2004 general election. In particular, the Committee provides oversight ensuring that:

- Bond revenues are expended only for the construction, reconstruction, rehabilitation or replacement of college facilities, including the furnishing and equipping of college facilities or the acquisition or lease of real property for college facilities.
- No bond revenues are expended for any teacher or administrative salaries or other college operating expenses.

### To carry out its role, the Citizens' Oversight Committee may:

- Receive and review copies of the annual independent performance audit conducted to ensure that the bond revenue is expended only on the specific projects listed in the bond proposition.
- Receive and review copies of the annual independent financial audit of the bond revenue and expenditures.
- Inspect college facilities and grounds to ensure that the bond revenue is expended in compliance with the requirements of paragraph (3) of subdivision (b) of Section 1 of Article XIII A of the California Constitution.
- Receive and review copies of deferred maintenance proposals or plans developed by the District.
- Review efforts by the District to maximize bond revenues by implementing various cost saving measures.



## Chairperson's Letter To the Residents of the San Joaquin Delta Community College District *(Pamela Sloan - Chairperson)*

### Enhancing the Learning Experience Through Quality Facilities

One of the first things I was introduced to upon arriving in Stockton 2004 was San Joaquin Delta College. I was impressed with the curriculum, community outreach, and the dedication of the administration and staff to enrich this community with educational opportunities. However, the campus was aging and deteriorating.

Since that time, the Measure L Bond Program has been in full force. The passing of the Measure L Bond in 2004 has allowed Delta College to complete major projects funded by Measure L. Those projects include: Physical Education/Recreation and Athletics (PERA) venues and facilities (2007-11), DeRicco Student Services Building (2009), South Campus at Mountain House (2009), Goleman Library Renovation (2010), Lee Belarmino Sr. District Data Center (2011), Science and Math Building (2014), and demolition of the Cunningham Building in 2014.

The dust has not settled as Delta College continues with renovations, new construction, and fine-tuning the campus in the 2013-14 fiscal year. The Forum Classroom Renovation Project, completed just in time for the 2013 fall semester, showcases three new classrooms, new carpets, seating upgrades and ADA compliance. The Shima Heavy Equipment and Diesel

Expansion Project started in late 2012 and was completed in spring 2014. Additional upgrades are pending. The Shima project included the relocation of the Ornamental Horticulture Greenhouse, which reopened in the spring of 2014 as a new state-of-the-art smart facility. Another project completed in 2014 is the Stockton Campus-Wide Restroom Renovation Project, bringing facilities in compliance with ADA, and modernizing restrooms in the Locke, Shima, Budd and Holt buildings. Yet, it is not all about large projects as there are ongoing campus-wide renovations, i.e. classrooms, painting, safety enhancements, energy efficiency improvements, technology and walkway lighting.

The momentum continues in 2015. The demolition of the Cunningham Building in late 2014 will allow the construction of the new Plaza/Courtyard in spring 2015. The Plaza will provide the opportunity to host outdoor classes, special events, and student gatherings. The Holt/Budd Shops Renovation Project begins design in late spring 2015, with a completion date of August 2017.

We applaud the vigilant efforts to improve the facilities infrastructure, and educational experience within the District, and the Measure L Bond Program Citizens' Oversight Committee (COC) will continue to be dedicated and committed to ensuring that the taxpayer's money is spent as promised when Measure L was passed over ten years ago.

Pamela Sloan  
*Committee Chairperson,  
November 2014 - Present*



# Summary of Major Projects

## Stockton Main Campus (Brief Review)



During the period of this report, the College's efforts focused on: the completion and occupancy of the Science and Mathematics Building and the Shima Heavy Equipment & Diesel Expansion Project; the relocation and re-opening of the Ornamental Horticulture Greenhouse; the completion of the Stockton Campus-wide Restroom Renovation Project; Forum Classroom Renovation Project; **Phase I Interior Pathway LED Lighting Project**, and preparing for and starting the demolition of the Cunningham Building. These projects are highlighted in the next section. A special two page update on the Science & Mathematics Building is included, which opened on January 21, 2014; the official dedication took place on October 9, 2014.

Following this year's projects, some of the past projects accomplished through Measure L funding that demonstrate to Delta College's commitment to academic excellence are highlighted. These include the Lawrence and Alma DeRicco Student Services Building, the Irving Goleman Library renovation, and the Lee Belarmino Sr. District Data Center just to name a few.

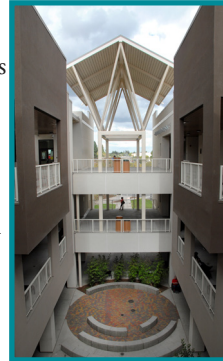
Finally, upcoming projects are highlighted to build anticipation for what's to come in our next report!

## 2013/2014 Fiscal Year Projects Science and Mathematics Building

January 21, 2014 was an exciting day for students and staff. Delta's beautiful new \$70+ million state-of-the-art Science and Mathematics Building was open for classes! Students attended their classes with a curiosity and eagerness one would expect from any new journey. A science adventure with the potential to lead to an exciting, rewarding career was about to begin.

"Our new Science and Mathematics Building is an example of Delta's commitment to educate students for careers in science, technology, engineering and math (STEM)," says Superintendent/ President Dr. Kathy Hart. "These STEM vocations are the careers of the future."

Since the Science and Mathematics Building groundbreaking on April 6, 2010, the center's construction was always a fascinating sight for passersby. Funded by a combination of Measure L and state matching funds, the \$70+ million Science and Mathematics Building Project replaces the outdated Cunningham Building. The striking three-story Science and Mathematics Building reflects a modern interpretation of the "village" character of existing campus buildings, and includes a striking center atrium. The atrium has become



a popular student meeting place, and a relaxing setting for a short break. The building provides expanded modern science labs and lecture spaces expected of a contemporary campus. A 70,000 sq. ft. laboratory core is featured, with dry labs on the first floor, wet biology labs on the second floor, and chemistry labs on the third floor. The labs wrap around a central service core, consisting of tech offices, lab preparation rooms and lab storage rooms. Students enter the labs from the opposite side of the service core, providing safe separation of students and chemicals.

In addition to sophisticated labs, the Science and Math Building has 20,000 sq. ft. of classrooms on each floor. Each block of classrooms will be dedicated to a specific discipline. To augment academics, the building includes high-tech "Smart Room" lecture halls, computer labs and a "Resource Center" for studying and tutoring.

The official dedication took place on October 9, 2014. As the Science and Mathematics Building moves into its second year of service, Dr. Kathy Hart emphasizes "The building is a shining example of Delta's leadership role in providing excellence in post-secondary education. Delta College, Stockton and San Joaquin County will be proud of this beautiful center for years to come."

Your science and mathematics career starts at San Joaquin Delta College!

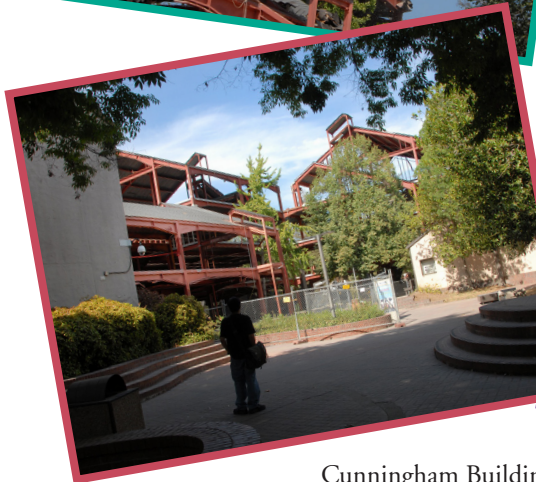
## Cunningham Demolition/Plaza

Science and Mathematics Building project funding included demolition of the Cunningham Building (as per the state matching funds agreement with Delta College). Demolition started in earnest during the period of this report. The first steps included asbestos abatement, then the actual demolition. A variety of specialized heavy equipment was used to knock down and deconstruct the building, then haul away the refuse. This massive job was a sight to behold, and was completed by the end of fall 2014. Cunningham demolition cleared the space that will encompass a beautiful new Plaza/Courtyard. The Plaza is expected to be finished by late spring of 2015.

Funding also included construction of a new Plaza/Courtyard where Cunningham once stood. During the period of this report, demolition of Cunningham was in its final stages, with construction of the Plaza ready to begin. Passersby stopped on a daily basis to gawk at the fascinating deconstruction processes that leveled the massive building. After asbestos abatement, specialized heavy industrial equipment moved in to smash Cunningham's walls, then cut and rip apart what was left of the steel superstructure. No easy task!

The Plaza/Courtyard will be a striking gathering place for students, staff and a variety of college activities. As per Delta's Facilities Master Plan, Plaza landscape features and irrigation design will make the most efficient use of the latest sustainability techniques, technologies, and plant selections. As with all Measure L projects, proficient wise use of water resources is of prime importance, especially with California's new drought status regulations. Irrigation schedules will utilize the minimum amount of water to maintain flora health. The

Plaza is expected to be completed during the spring of 2015.



Cunningham Building Demolition – 2014





## Shima Heavy Equipment and Diesel Expansion Project (Phase I)

This project enhanced the Shima Center lab/classroom space and open air labs to accommodate the diesel/heavy equipment, hydraulics repair and Caterpillar Dealer Service Technician programs. Shima expansion construction started in late 2012, and was completed during spring 2014, with classes moving into this top-notch learning facility later that semester. Fine-tuning of the facility continues. This project also included relocation of the Ornamental Horticulture Greenhouse, which re-opened with a new state-of-the-art “smart” facility in spring 2014, ready to train students for future cultivation occupations. Final greenhouse renovations were celebrated with an official ribbon cutting on April 14, 2015.

## Stockton Campus-Wide Restroom Renovation Project

This project refurbished campus restrooms to meet ADA compliance codes, update fixtures, and modernize the restrooms in the Budd, Locke, Shima and Holt buildings. The project was completed in time for the spring 2014 semester.

## Forum Classrooms Renovation Project



Three classrooms within the Forum Building received new carpets, seating upgrades, and technology upgrades. These classrooms were brought into ADA compliance. Students started attending classes in the renovated Forum classrooms at the start of the fall 2013 semester.

Delta College is vigilant in its commitment to ongoing repairs, maintenance and upgrades to ensure a superior instructional environment. Ongoing campus upgrades include: safety improvements; hazardous materials removal; paint projects, upgrading obsolete classrooms; energy efficiency improvements and upgrades to Information Technology.

## Past Accomplishments

Some of the major projects accomplished through Measure L funds are highlighted below.

### Lee Belarmino Sr. District Data Center (2011)



Since its dedication in March 2011, the Lee Belarmino Sr. District Data Center has served as the technological hub for the District. Service to Delta students, staff and the district is the objective of the Data Center. The key goal is to improve the delivery of technology services and expand Delta’s capabilities to meet future projected District needs. The college envisions a Data Center that will see Delta through the hi-tech advances of the next decades.

The Data Center consolidates the District’s Information Technology (IT) Services into one convenient location. These services include: network operations, programmer and analyst offices, audio-visual services and administrative support. Though some IT personnel are logistically stationed at various campus locations, this centralized service approach improves customer service and communication among the college’s IT staff.

Efficient use of energy is key in the Data Center’s design. Backup generators provide an uninterrupted electric supply during regional and local power outages. This backup measure ensures that the District’s state-of-the-art network operations center and other critical systems have a steady and reliable power supply. The building blends in with the existing setting, while providing secure data and a healthy “green” work environment. These “Green Features” include skylights, energy reduction windows, efficient water-use, recycled-source building materials and smart technologies.

Notably, the Data Center has the capability to provide Cloud Services (Data Storage) and virtual server services. The college is providing hosting services to the Chancellor’s Office for the Fusion and Cal-PASS programs, in addition to San Jose State. Delta College will continue to benefit from this impressive data processing capability, exploring innovative IT options for years to come.

### Irving Goleman Library (2010)

The renovated Irving Goleman Library reopened its doors to students on the first day of Delta’s 2010 fall semester. As Irving Goleman’s son, renowned psychologist and author Dr. Daniel Goleman said during 2010’s ribbon cutting, “Libraries are sacred centers preserving





wisdom, and thus serve as the main center of learning for colleges.” Delta’s dedicated library staff constantly works to ensure that Goleman Library services remain “cutting-edge.” Students and staff alike appreciate the Goleman Library’s striking exterior design aesthetics and state-of-the-art improvements which produce a technologically advanced information learning center. The principal goal of the remodel was to create not only a stunning new exterior design, but an atmosphere conducive to study and modern information retrieval.

At over 50,000 sq. ft., the library creates a student-friendly and technologically advanced hub for learning. An impressive list of improvements include: universal internet access, improved reference and cataloguing services, 15 group study rooms, a faculty reading room, two small classrooms that can be converted into one large classroom, space for the college archives, and new furniture for all public areas. The renovation design included an additional 7,000 square feet for library services, with room for 66 computers in the Reference/Information Commons area.

The Goleman faculty and staff constantly work with students to unlock the library’s enormous access to informational resources with research training workshops throughout the year. Thanks to Measure L, Delta’s Irving Goleman Library is equipped to make available advanced research tools and learning opportunities for years to come. The goal: Student Success!

## Atherton Auditorium, Tillie Lewis and Studio Theatres (2010)

With the conclusion of all Bond funded Center for the Arts improvements in 2010, Delta’s beautiful 1,400-seat Atherton Auditorium, 400-seat Tillie Lewis Theatre and renamed Alfred H. Muller Studio Theatre (2013) reaffirmed their sterling reputations as top San Joaquin County performance/ presentation venues. Al Muller is a distinguished retired Delta College drama faculty member. Mr. Muller was elected to the “College of Fellows of the American Theatre” at the Kennedy Center for his devoted service to state, regional and national theater.



Atherton Auditorium continues as the host theatre for the acclaimed Stockton Symphony. Symphony director Peter Jaffe conducts the top musical guest performers in the world. The Atherton and Tillie Lewis venues provide for national and local guest artist productions, celebrated speakers and numerous community/ educational events throughout the year.

Measure L upgrades included: Atherton curtains, theater rigging, orchestra pit lift, seating, carpets, safety isle lighting/rails and Americans with Disabilities Act (ADA) seats. The college also funded lighting and audio system enhancements. With these upgrades, San Joaquin Delta College continues its long tradition of having the most desirable theater venues in the Central Valley. That’s entertainment!

## Lawrence and Alma DeRicco Student Services Building (2009)



Since its opening in 2009, the Lawrence and Alma DeRicco Student Services Building has become the “Gateway” to Delta College. The building offers a “one stop shop” to a variety of student services, including: Admissions, Records and Registration; Financial Aid/ Scholarships & Veterans Services; Leo P. Burke Veteran Resource Center; Counseling and Special Services; Disability Support Programs; Outreach and Community Relations; CalWORKs; EOPS; student/staff meeting rooms, and more! During the period of this report, the DeRicco Service Window Project repaired existing service windows, providing better operation with safety augmentations. Additional lobby renovations are planned.

Delta College clearly benefits from the cost savings that consolidation of essential campus services in one location allows. During this budget conscious era, Delta’s dedicated DeRicco Student Services staff constantly explores new opportunities to provide efficiency in service delivery. Busy students, many of whom hold full time jobs, appreciate the time-saving efficiency of the DeRicco Building’s location near Delta’s main Pacific Avenue entrance.

The 50,000 square foot DeRicco Building’s unique eye-catching architectural design maximizes available space. It includes a second story terrace overlooking the beautiful Elizabeth Humbargar “Tolerance Garden,” which provides a restful meeting and break area for students and staff alike. The garden recognizes

former Delta College counselor Elizabeth Humbargar for her sacrifices on behalf of the Japanese-American community during the turbulent years of World War II and beyond.

### South Campus at Mountain House (2009)



The South Campus at Mountain House opened its doors to approximately 2,300 students on August, 17, 2009. Since that time, Mountain House enrollment has remained relatively steady each semester, offering a full range of General Education and AA/AS degree opportunities.

Mountain House features over 30,000 square feet of modular classroom and lab environments, including the Cisco Networking Academy, exclusive to Mountain House. The center lives up to an important promise of Measure L, offering students from the southern part of the district technologically advanced learning spaces, excellent teachers and the same quality instruction students enjoy at the Stockton campus...but closer to home.

With jobs of the future an important aspect of community college education, Mountain House includes a state-of-the art Cisco Networking Lab, and a high-tech Electric/Solar Laboratory, both Mountain House exclusives. In addition, equipment upgrades to the Engineering Computer Lab and General Computer Lab have been completed.

Attention new and returning students! If you live in the southern part of Delta's district, check out the South Campus at Mountain House!

### Lourn Phelps Police Services Building (2009)

Since its completion in 2009, the Lourn Phelps Police Services Building has provided the modern police facility that the campus required. Key among the benefits: Improved workflow and police response, efficiency and safety for the campus community.

The 3,600 square foot modular building is twice the size of the old "Police Cottage" and includes dedicated areas: Surveillance Room, Live Scan (fingerprinting), Equipment Ready Room, Holding Area, Interview Room, Dispatch Center, Property/Evidence Room, Conference Room, Armory, staff offices and men's and women's locker rooms.



Each function related to police work has its own adjacent room, situated in the proper logistical law enforcement procedure order. This design alone saves a tremendous amount of officer time and allows for secure, efficient police case processing. The Phelps Building also has a backup power generator for use in emergency situations. The facility is completely self-sufficient and can act as a command center during emergencies.

The building is named for the late Lourn Phelps, who was responsible for converting San Joaquin Delta College's security department into the District's police department.

### Physical Education/Recreation and Athletics (PERA Improvements, 2007-2011)

The first major Measure L projects completed at Delta were Physical Education/Recreation and Athletics (PERA) venues - an impressive lineup!



The parade of new athletics complex venues and upgrades started in spring 2007 with the dedication of the Nick Cecchetti Baseball Field. Enhanced with state-of-the-art Field Turf, new dugouts, bullpens, scoreboard and numerous stadium upgrades, the Mustangs and their opponents look forward to playing at this exceptional baseball venue. Consistently, Mustangs Baseball is recognized as one of the best teams in California and the nation!

Soon to follow was the Lawrence DeRico Football Stadium in 2008. The stadium is named for the late Lawrence DeRico, former superintendent/president, and considered one of the founding fathers of Delta College. Along with seating and infrastructure upgrades, the venue features a special Field Turf football surface, specifically designed with the latest technologies to help reduce football related injuries.

2008-09 also saw the completion of the Track Complex, named for Merv Smith, Delta's long-time head cross country/track & field coach. The track venue features a Mondo SX

“Olympic Caliber” competition track, on par with those used at recent Olympic Games. Delta’s track throwing events area was named for Raydell Barkley, a Delta football/track & field coach. Both Merv Smith and Raydell Barkley were outstanding educators, in addition to being members of the California Community College Track & Field/Cross Country Hall of Fame.

Delta’s sparkling Bucky Layland Softball Complex was named after the most successful softball coach in Delta College history, Cindy “Bucky” Layland. Conveniently located in Delta’s athletic complex, the lady Mustangs started playing in their impressive state-of-the-art Field Turf facility in 2009. Needless to say, the Mustangs are tough to beat in this facility and their exceptional records show it!

With completion of the football, baseball, softball & track venues, Delta finalized its locker and training room upgrades in 2010-11, in addition to a new point-of-sale Ticket Booth for our athletics complex. These upgrades brought the college into compliance with the Title IX equality in sport requirements.

## Projects Coming Up in 2014/2015 and Beyond

### Exterior Pathway Lighting, Phase II

With projected completion by summer 2015, the Phase II Pathway Lighting project is funded with matching Proposition 39 and Measure L Bond funds. Phase II will augment 2014’s Phase I interior LED lighting upgrades, and replace all existing building exterior, pathway, and parking lot lighting fixtures with LEDs. These upgrades will improve energy efficiency, increase safety/visibility, and reduce operating and maintenance costs.



### Shima Heavy Equipment and Diesel Expansion Project, Phase II

Phase II will add an elevator and stairs to the mezzanine level of the Shima shops area. In addition, more pneumatic tanks and air tools will be supplied to multiple shops, with exhaust system upgrades and other shop/lab improvements. Construction is expected to start during the summer of 2015, with an estimated completion in late 2015.

### Soccer Field Relocation Project

New to the PERA parade of Measure L projects is the Soccer Field Relocation Project, slated to begin in late summer of 2015. Completion is projected for December 2015. The field currently shares space with the track throwing events area, which introduced turf safety issues for soccer players. The new state-of-the-art artificial turf soccer field will be located on the North West end of the campus, adjacent to Pershing Ave. The field will occupy what is currently part of the football practice field and a large section of Delta’s current tennis court area. The existing tennis courts will be modified to five courts. Studies continue to assure proper field drainage and convenient access to the new soccer field.

Year-in and year-out, Delta College athletic teams are among the best in the California Community College System. The college’s ultra-modern football, baseball, softball, track and soon-to-be soccer venues, play a huge role in the success of Mustangs teams - with the added benefit of invaluable name recognition throughout the state. Go Mustangs!



## Stockton Campus Elevator Renovations

The Stockton campus utilizes ten elevators that date back to the original construction of the campus in the early 1970’s. The elevators are now well over 40 years old. Service and repair has become increasingly difficult, not to mention the struggle to obtain parts. Since all buildings on campus are two to four stories high, these elevators are essential to provide routine access to classrooms by students, staff and people with disabilities.

The project will include a phased renovation of the mechanisms and electronics for each campus elevator. The result will be more modern, reliable, and serviceable elevators. The first phase of the \$2.15 million project starts in the spring of 2015, with expected completion in December 2015. The phased renovations will be planned in such a way to mitigate any inconvenience to staff and students.

## The Holt/Budd Shops Renovation Project

This project plans to benefit several programs, including Automotive Technology with additional shop space, improved electrical utilities, ventilation and “Smart” classrooms.



The shop renovations will meet Americans with Disabilities Act (ADA) and fire code compliance standards. Existing utility infrastructure will be upgraded to the District’s current standards. The budget has been set at \$19 million, allowing a contingency for additional bond projects. Renovation construction is scheduled to begin in the summer of 2015, with project completion tentatively set for August 2017.

## North County Center

One of Measure L's commitments to the taxpayers promised the District would work toward construction of a North County Center. A North County campus will provide career trades education and comprehensive opportunities for students to earn transferable AA or AS degrees to four-year colleges and universities. In March 2014, Delta's Board of Trustees reinstated \$15 million to take steps to achieve that goal. These funds will allow the college to advance a feasibility study on the land it acquired in 2006 for this purpose and to potentially conduct due diligence on alternative sites, followed by site selection, requisite planning and approvals, and potentially some initial development.

## Manteca Farm

Delta College continues to explore the best options to utilize the 160-acre Manteca Farm and its assets to the district's benefit. The Barn, Shade & Fence project has been put on hold pending additional research. In the meantime, the farm continues to be the hub of Delta College's vital Ag education programs.



## Planetarium Preservation

As part of the matching funds agreement with the state to build the Science and Mathematics replacement building, the Cunningham building was demolished...taking with it the space that housed the George H. Clever Planetarium.

However, all is not lost for students and the public who "gazed at the skies" via planetarium presentations and shows. The state has indicated a new planetarium for Delta will be a high priority under a new state facilities bond. The state would pay 80 percent of the cost, leaving Delta with a cost of around \$3 million. Currently, this project is on hold. Stay tuned!

## Additional Measure L Projects



Delta's Board has approved these additional vital Measure L projects, currently under development or in progress:

- \* Stockton Campus Selected Flat Roof Replacements
- \* Stockton Campus Well Refurbishment
- \* Stockton Campus Irrigation System Repair & Replacement
- \* Stockton Campus Fence Replacement/ Security Upgrades
- \* Pathways Project Phase II – Design for Improved Stockton Campus Pedestrian Flow; Pedestrian Flow to Public Transportation; Disabled Persons Access (Under Development)
- \* DeRico Building Lobby & Service Windows Security Modifications
- \* New Stockton Campus Emergency Notification System (Under Development)

## Facilities Master Plan & Educational Master Plan



Part of the mission of San Joaquin Delta College is to provide students with the skills and knowledge that are relevant in today's economy. In addition, the mission affords educational/ vocational training and transfer opportunities to all residents of the District. Delta's Facilities Master Plan provides the facility components needed to uphold Delta's mission and fulfill the direction established within the college's Educational Master Plan.

On November 16, 2010, the San Joaquin Delta Community College District Board of Trustees adopted the 2010 Facilities Master Plan and approved the Recommended Projects list. Starting in Fall 2014, the college has been working to update its Educational Master Plan (currently in draft form) and soon will be working to update a refreshed Facilities Master Plan to meet the District's future needs.

To view San Joaquin Delta College's existing Facilities Master Plan, Educational Master Plan, and Recommended Projects, visit: <http://bit.ly/N7b1vl>

# Independent Auditor's Report

## *Board of Trustees and Citizens' Bond Oversight Committee for Measure L San Joaquin Delta Community College District Stockton, California*

We have conducted a performance audit of the San Joaquin Delta Community College District Measure L General Obligation Bond funds for the year ended June 30, 2014.

We conducted our performance audit in accordance with Government Auditing Standards issued by the Comptroller General of the United States. Those standards require that we plan and perform the audit to obtain sufficient, appropriate evidence to provide a reasonable basis for our conclusion based on our audit objectives. We believe that the evidence obtained provides a reasonable basis for our findings and conclusions based on our audit objectives.

Our audit was limited to the objectives listed on page 6 of this report which includes determining the compliance with the performance requirements for the Proposition 39 Measure L General Obligation Bonds under the applicable provisions of Section 1(b)(3)(C) of Article XIII A of the California Constitution and Proposition 39 as they apply to the bonds and net proceeds thereof. Management is responsible for San Joaquin Delta Community College District's compliance with those requirements.

Solely to assist us in planning and performing our performance audit, we obtained an understanding of the internal controls of San Joaquin Delta Community College District to determine if internal controls were adequate to help ensure the District's compliance with the requirements of Proposition 39, as specified by Section 1(b)(3)(C) of Article XIII A of the

California Constitution. Accordingly, we do not express any assurance on the internal controls.

The results of our tests indicated that, in all significant respects, San Joaquin Delta Community College District expended Measure L General Obligation Bond funds for the year ended June 30, 2014 only for the specific projects developed by the District's Governing Board and approved by the voters, in accordance with the requirements of Proposition 39, as specified by Section 1(b)(3)(C) of Article XIII A of the California Constitution.

*Crowe Horwath LLP*

Crowe Horwath LLP

*Sacramento, California, December 19, 2014*

## **OBJECTIVES**

The objective of our performance audit was to determine that the District expended Measure L General Obligation Bond funds for the year ended June 30, 2014 only for the purposes approved by the voters and only on the specific projects developed by the District's Board of Trustees, in accordance with the requirements of Proposition 39, as specified by Section 1(b)(3)(C) of Article XIII A of the California Constitution.

## **SCOPE**

The District provided to us a list of all Measure L General Obligation Bond project expenditures for the year ended June 30, 2014 (the "List"). An approximate total of 770 transactions were identified, representing \$18,117,598 in expenditures from July 1, 2013 through June 30, 2014.



## **METHODOLOGY**

We performed the following procedures to the List of Measure L General Obligation Bond project expenditures for the year ended June 30, 2014:

- Interviewed District management related to controls over planning, bidding, contracting, expenditure of bond funds and financial reporting to assess that controls have been put in place and are working as documented.
- Documented District procedures and controls over planning, bidding, contracting, expenditure of bond funds and financial reporting.
- Performed testing to determine that the District controls over planning, bidding, contracting, expenditure of bond funds and financial reporting have been put in place and are working as documented.
- Verified the mathematical accuracy of the List.
- Reconciled the list to total bond expenditures as reported by the District in the District's audited financial statements for the year ended June 30, 2014.
- Selected a sample of 25 expenditures totaling \$10,642,583. The sample was selected to provide a representation across specific construction projects, vendors and expenditure amounts. The sample represented 3% of the number of expenditures and 59% of the total expenditure amounts. Verified that the expenditures were for the approved projects and were expended for upgrading, acquiring, constructing and equipping school facilities, including repairs and safety improvements and for expanding/establishing campuses/ education centers and that the funds were not spent for District administrative or instructional salaries or other administrative expenses.

# Independent Auditor's Report

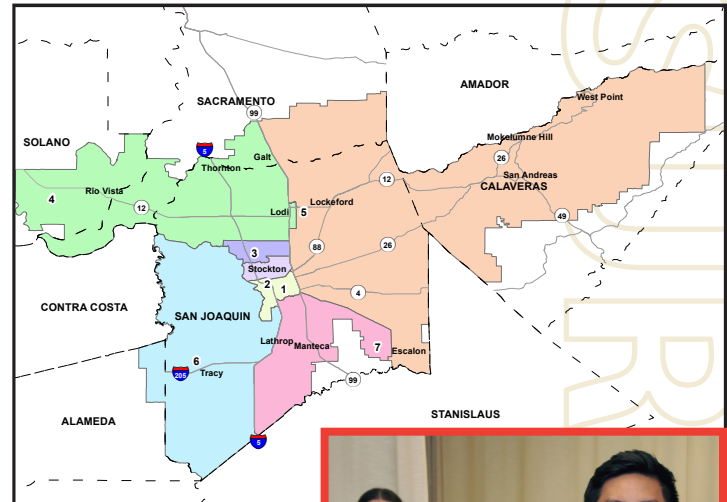
## CONCLUSIONS

The results of our tests indicated that, in all significant respects, San Joaquin Delta Community College District expended Measure L General Obligation Bond funds for the year ended June 30, 2014 only for the specific projects developed by the District's Governing Board and approved by the voters, in accordance with the requirements of Proposition 39, as specified by Section 1(b) (3)(C) of Article XIII A of the California Constitution.



# Financial Statements

San Joaquin Delta College  
Measure L Bond Program  
Financial Report as of Q4 2013-14



Total Bond Program Budget Reconciliation	
2005 Series A Release	\$ 90,000,000
Series A Premium	1,809,984
Series A Interest	10,006,332
2006 Series A Refunded	15,500,000
Series A Refunded Premium	1,162,080
Series A Refunded Interest	1,921,221
2008 Series B Release	92,000,582
Series B Premium	2,405,257
Series B Interest	2,672,472
<b>Budget to Date</b>	<b>\$ 217,477,928</b>
<b>Future Releases</b>	<b>67,999,418</b>
<b>Total</b>	<b>\$ 285,477,346</b>

### Total Bond Program Expenditures

	FY 04-05 to FY 06-07	FY 07-08 to FY 09-10	FY 10-11 to FY 12-13	FY 13-14	Program to Date
2005 Measure L Series A	\$ 39,838,519	\$ 61,977,469			\$ 101,815,988
2006 Measure L Refunded	1,279,404	8,213,548	7,312,135	93,051	16,898,138
2008 Measure L Series B		37,281,326	35,316,287	18,024,546	90,622,159
<b>Total Bond Program Expenditures</b>	<b>\$ 41,117,923</b>	<b>\$ 107,472,343</b>	<b>\$ 42,628,422</b>	<b>\$ 18,117,597</b>	<b>\$ 209,336,285</b>



# Financial Statements



The DeRicco Student Services Building Topping Ceremony took place on January 28, 2009.

Budget

## Project Expenditures by Category Program to Date

Projects		Board Approved	Site Acq. Dev & Planning	Program & Project Mgmt	Design	Construction - Indirect	Construction - Direct	Grp II Equip	Other**	Total Expended
Close	DeRicco Service Window	16,477		863		3,750	11,864			16,477
	Forum Renovations	1,350,693		33,463	257,515	421,860	436,164	201,691		1,350,693
Active	Budd Remediation (Title IX)	1,333,500		6,895	136,907	189,146	951,164	42,432		1,326,544
	Campus Path of Travel Ph II	100,000		8,334		8,472				16,806
	Campus Restroom Renovation	2,000,000			171,988	248,158	1,528,460	3,904		1,952,510
	DeRicco Student Services	29,465,000	118,908	1,277,889	1,024,938	2,657,194	23,261,891	826,805	254	29,167,879
	District Data Center	11,589,000	18,000	203,060	575,799	1,560,325	8,089,998	684,684		11,131,866
	Elevator Renovations	950,000		3,072	68,400	23,156				94,628
	ENS Program Study	200,000								-
	Fence Replacement	130,000		1,675	12,630	7,284				21,589
	Holt/Budd Shop Ren	19,000,000		118,870			318			119,188
	Irrigation Repair	300,000								-
	Irrigation Well Project	580,250		4,871			40,211			45,082
	Manteca Barn/Shade/Fence	935,000		10,637	30,441					41,078
	Math & Science	46,874,311	292,949	1,547,219	3,910,694	5,430,489	27,207,285	672,480	1,025,474	40,086,590
	North County	15,000,000		18,606						18,606
	Pathway Exterior Renovation	882,000		10,144	45,474	45,772	243,450	59,819		404,659
	Planetarium Preservation	3,000,000		30,117						30,117
	Program Mgmt Services	280,000		11,581						11,581
	Roof Replacement	502,536		4,342	40,365	18,888				63,595
	Shima Heavy Equipment	14,000,000		137,390	742,880	1,929,748	8,857,965	258,743	1,001	11,927,727
	Shima Heavy Equipment Ph II	500,000								-
	Soccer Field Repairs	100,000		6,000	21,089					27,089
	RFAIR	989,769							842,866	842,866
	Program Contingency	24,745,470							(14,225)	(14,225)
	Cost of Issuance	5,377,321							5,377,321	5,377,321
	Debt Reduction	11,941,892							11,941,892	11,941,892
	Total Current Projects	\$ 190,776,049	\$ 429,857	\$ 3,400,702	\$ 6,781,605	\$ 12,159,161	\$ 70,140,213	\$ 2,548,867	\$ 19,174,583	\$ 114,634,988
Total Closed Out Projects	\$ 94,701,297	\$ 13,974,217	\$ 7,138,321	\$ 10,271,953	\$ 8,905,979	\$ 48,137,070	\$ 6,272,013	\$ 1,744	\$ 94,701,297	
<b>Measure L Bond Program</b>	<b>\$ 285,477,346</b>	<b>\$ 14,404,074</b>	<b>\$ 10,539,023</b>	<b>\$ 17,053,558</b>	<b>\$ 21,065,140</b>	<b>\$ 118,277,283</b>	<b>\$ 8,820,880</b>	<b>\$ 19,176,327</b>	<b>\$ 209,336,285</b>	

# Financial Statements

**San Joaquin Delta College  
Bond Budget Reconciliation  
Measure L Bond, Refunded and State Funds  
Q4 2013-14**

	Projects	Bond Budget	State Budget	Total Budget
Active	Budd Remediation (Title IX)	\$ 1,333,500	\$ -	\$ 1,333,500
	Campus Path of Travel Ph II	100,000		100,000
	Campus Restroom Renovations	2,000,000		2,000,000
	DeRicco Student Services	29,465,000		29,465,000
	District Data Center	11,589,000		11,589,000
	Elevator Renovations	950,000		950,000
	ENS Program Study	200,000		200,000
	Fence Replacement	130,000		130,000
	Holt/Budd Shop Renovations	19,000,000		19,000,000
	Irrigation Repair	300,000		300,000
	Irrigation Well Project	580,250		580,250
	Manteca Barn/Shade/Fence	935,000		935,000
	Math & Science	46,874,311	22,278,000	69,152,311
	North County	15,000,000		15,000,000
	Pathway Lighting Renovation	882,000		882,000
	Planetarium Preservation	3,000,000		3,000,000
	Program Mgmt Services	280,000		280,000
	Roof Replacement	502,536		502,536
	Shima Heavy Equipment	14,000,000		14,000,000
	Shima Heavy Equipment Ph II	500,000		500,000
	Soccer Field Repairs	100,000		100,000
	Program Contingency	24,745,470		24,745,470
	Reserve for Arbitrage Interest Rebate	989,769		989,769
	Cost of Issuance	5,377,321		5,377,321
	Debt Reduction	11,941,892		11,941,892
	<b>Total Active Projects</b>	<b>\$ 190,776,049</b>	<b>\$ 22,278,000</b>	<b>\$ 212,774,049</b>
	<b>Total Closed Out Projects</b>	<b>94,701,297</b>	<b>17,119</b>	<b>94,718,416</b>
	<b>Total Budget</b>	<b>\$ 285,477,346</b>	<b>\$ 22,295,119</b>	<b>\$ 307,492,465</b>





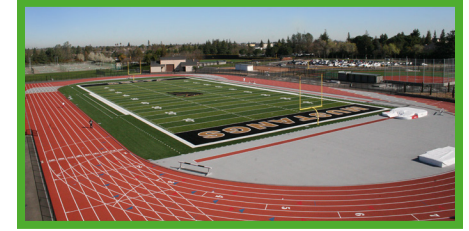
# Financial Statements

San Joaquin Delta College

Measure L Bond Program

Active Project Reference to Ballot Language

Q4 2013-14



				Measure L Ballot Language				
				1	2	3	4	5
Ref	Active Projects	Budget / Actual	Other	Repair leaky roofs, decaying walls, electrical wiring	Improve fire safety	Remove asbestos	Expanding/establishing Stockton, Manteca, Tracy, Lodi/Galt, Foothill area campuses/ education centers	Upgrading, acquiring, constructing, equipping buildings, sites, classrooms
5	Budd Remediation (Title IX)	\$ 1,333,500	\$ -	\$ -	\$ -	\$ -	\$ -	\$ 1,326,544
5	Campus Path of Travel Ph II	100,000						16,806
5	Campus Restroom Renovations	2,000,000						1,952,510
5	DeRicco Student Services	29,465,000						29,167,879
5	District Data Center	11,589,000						11,131,866
1	Elevator Renovations	950,000		94,628				
5	ENS Program Study	200,000						
5	Fence Replacement	130,000						21,589
5,3	Holt/Budd Shop Renovations	19,000,000						119,188
1	Irrigation Repair	300,000						
1	Irrigation Well Project	580,250		45,082				
4	Manteca Barn/Shade	935,000					41,078	
5	Math & Science	46,874,311						40,086,590
4	North County	15,000,000					18,606	
5	Pathway Lighting Renovation	882,000						404,659
5	Planetarium Preservation	3,000,000						30,117
5	Program Mgmt Services	280,000						11,581
1	Roof Replacement	502,536		63,595				
5	Shima Heavy Equipment	14,000,000						11,927,727
6	Shima Heavy Equipment	500,000						
5	Soccer Field Repairs	100,000						27,089
	Reserve for Arbitrage Interest							
	Rebate	989,769	842,866					
	Program Contingency	24,745,470	(14,225)					
	Cost of Issuance	5,377,321	5,377,321					
	Debt Reduction	11,941,892	11,941,892					
	Closed Projects	94,701,297		398,858	1,665,270	805,471	38,934,684	52,897,014
	<b>Measure L Bond Program</b>	<b>\$ 285,477,346</b>	<b>\$ 18,147,854</b>	<b>\$ 602,163</b>	<b>\$ 1,665,270</b>	<b>\$ 805,471</b>	<b>\$ 38,994,368</b>	<b>\$ 149,121,159</b>

**Measure L Bond Total Expenditures \$ 209,336,285**



# San Joaquin Delta Community College District Board of Trustees

## Position

<b>Steve Castellanos</b> , FAIA - Area 5, East SJC & Calaveras	President
<b>Claudia Moreno</b> , Area 2, Central Stockton	Vice President
<b>Janet Rivera</b> , Area 3, North Stockton	Clerk
<b>C. Jennet Stebbins</b> , Area 1, South Stockton & Weston Ranch	Member
<b>Richard Vasquez</b> , Area 4, Lodi, Galt & Delta	Member
<b>Dr. Teresa Brown</b> , Area 6, Tracy and Mountain House	Member
<b>Catherine Mathis</b> , M.D. - Area 7, Lathrop, Manteca, Partial South County	Member
<b>Alejandro Gomez</b>	Student Representative

## Citizens' Oversight Committee Members

	<b>Representative</b>	<b>Term</b>
<b>Mark S. Adams</b>	<i>At-Large Representative</i>	2013-15
<b>Beverly Fitch McCarthy</b>	<i>At-Large Representative</i>	2014-16
<b>Bud Grafius</b>	<i>At-Large Representative</i>	2014-16
<b>Pamela Sloan</b>	<i>At-Large Representative</i>	2014-16
<b>Dr. Armando Valerio</b>	<i>At-Large Representative</i>	2013-15
<b>Lisa Vigil</b>	<i>Business Representative</i>	2013-15
<b>Mercedes Silveira-Gouveia</b>	<i>Foundation Representative</i>	2014-16
<b>Garry Potten</b>	<i>Senior Representative</i>	2014-16
<b>Katherine McBride</b>	<i>Student Representative</i>	2014-16
<b>Lester Patrick</b>	<i>Taxpayers Representative</i>	2014-16



## Upcoming Meetings

The Citizens' Oversight Committee invites community members to attend its regularly scheduled quarterly meetings. Committee meetings are held in the Board Room at the President's Office (Administration 103) on the campus of San Joaquin Delta College, 5151 Pacific Ave, Stockton, CA 95207. All meetings are open to the public. Meeting dates and agendas are posted on the Citizens' Oversight Committee web site: <http://bit.ly/1hcQmRo>, and Citizens Oversight Committee bulletin boards, located on the first floor of Delta's Administration Building, and exterior board located on Atherton Auditorium next to the college's Holt/Atherton entry gate.

For more information regarding Measure L and the Citizens' Oversight Committee, please visit the Measure L Bond web site at: [www.deltacollege.edu/bond/bond/](http://www.deltacollege.edu/bond/bond/)

**Inquiries:** Kathy Roach, SJDCCD Measure L Bond Program Manager, Bond Management Office, 5151 Pacific Avenue, Stockton, CA 95207, [kroach@deltacollege.edu](mailto:kroach@deltacollege.edu), 209-954-5360.

**Gerardo Calderon**, Vice President of Operations, [gcalderon@deltacollege.edu](mailto:gcalderon@deltacollege.edu), 209-954-5052.



# MEASURE L

## Measure L Bond Program Citizens' Oversight Committee

### *San Joaquin Delta College*

For more information regarding Measure L and the Citizens' Oversight Committee please visit the Measure L Bond Web Site at [www.bond.deltacollege.edu](http://www.bond.deltacollege.edu) or call 209-954-5022

Attn. Bond Management Office  
Measure L Citizens' Oversight Committee  
5151 Pacific Avenue  
Stockton, CA 95207

Project Supervisor/Photography: Jim Vergara  
Publications Center Manager: Gilbert Vanover  
Graphic Design/Layout: Siv Taing  
Reprographics Tech: Zach Walker